



# 680011

*Pressure Switch*

---

# 680011 Series

Pressure Switch

**AKME**  
SOLUÇÕES EM AUTOMAÇÃO

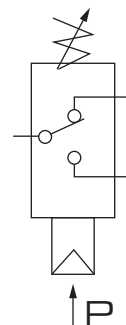


## Feature

- The pressure switch is used to measure the maximum pressure, opening contact if it exceeds the pressure limit of your machine.

## Symbol

Normal Open/Closed Type



## Specification

Model	680011
Working Media	Compressed Air
Working Pressure Range	1 - 10 Bar
Temperature	-5 ~ 60°C
Action Mode	Adjustable Pressure Type
Installation and connection mode	Male Thread
Port Size	PT1/8 (Need Customized)
Working Pressure	0 ~ AC220V
Max. Working Pressure	500mA
Max Power	100VA, 24VA
Isolation Voltage	1500V, 500V
Max. Pulse	200 Cycles/min
Service life	10 <sup>6</sup> Cycles
Protective Class (With Protective Sleeve)	IP54

# 680011 Series

Pressure Switch

## Overall Dimension

680011

