



DNC

Standard Cylinder ISO15552

DNC Series

Standard Cylinder ISO 15552

AKME
SOLUÇÕES EM AUTOMACÃO



SOLUÇÕES EM AUTOMACÃO

Ordering Code

DNC	D	50	50	-	-	-	-	-
Series	Series Code	Bore	Stroke	Tube Type	Piston rod Material	Seal Type	Piston Rod Protection	Extension
DNC: ISO 15552 Standard cylinder	Blank: Standard double acting D: Double-shaft double acting J: Double-shaft with adjustable stroke	32 40 50 63 80 100 125 160 200 250 320		MK: Profile with slot for sensor T: Tie rod	Blank: Steel SAE 1045 I: Stainless Steel	Blank: Buna N and Magnetic V: Viton and Magnetic	Blank: No protection 2: With protection Extension of 30% with protection	Blank: Standard PH XX: MM Extension Tie rod PR XX: MM Extension thread

Specification

Bore (mm)	32	40	50	63	80	100	125	160	200	250	320
Operation	Double Acting										
Working Medium	Air										
Mountings	Basic FA/FB - CA - CB - LB - Y+PIN - B - F - SDB										
Operating Pressure Range	1 ~ 9.0 Kgf/cm ²										
Proof Pressure	13.5 Kgf/cm ²										
Cushion	Adjustable Cushion										
Port Size	G1/8"	G1/4"	G3/8"		G1/2"		G3/4"	G1"			
Ø Rod (mm)	12	16	20		25		32	40	50	63	
Rod Thread	M10x1.25	M12x1.25	M16x1.5		M20x1.5		M27x2	M36x2	M42x2	M48x2	

Features

1. The cylinder is in accordance with the ISO15552.

2. The piston seal adopts two NBR+PA material as Y type one-way sealing structure with compensation function, long service life and low starting pressure.

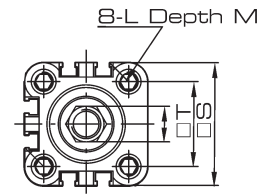
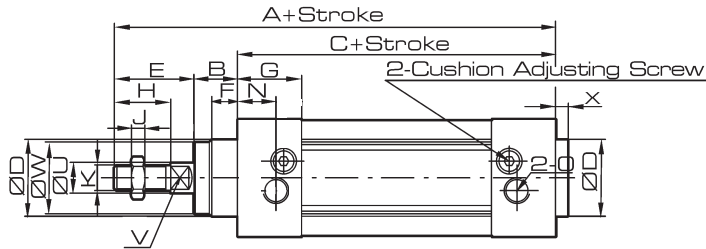
3. The rod seal uses PU material with the characteristics of high strength, good toughness, wear resistance, oil resistance and aging resistance.

DNC Series

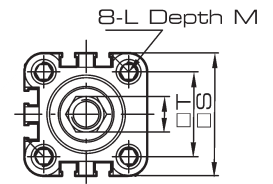
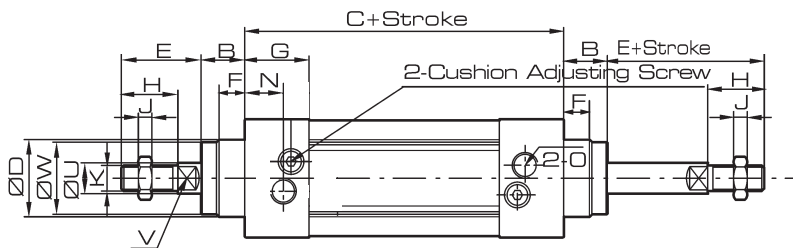
Standard Cylinder ISO 15552

Overall Dimension

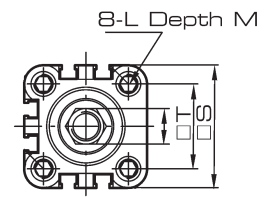
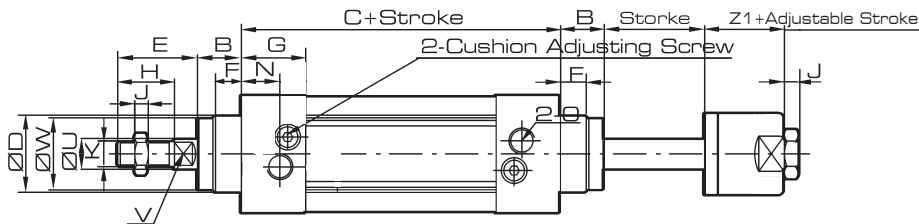
DNC



DNCD



DNCJ



DNC Series

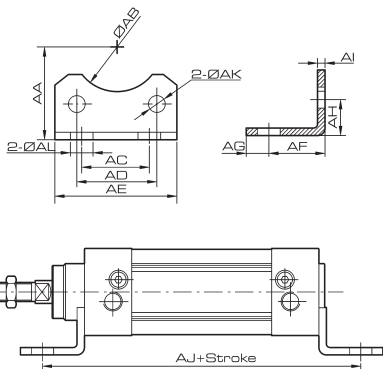
Standard Cylinder ISO 15552

Dimension

Bore/ Symbol	A	B	C	D	E	F	G	H	I	J	K	L
32	142	16	94	30	33	10	25	22	17	6	M10x1.25	M6x1
40	159	20	105	35	34	10	29.5	24	17	7	M12x1.25	M6x1
50	175	27	106	40	42.5	10	32	32	23	8	M16x1.5	M8x1,25
63	190	26	122	45	42	10	36	32	23	8	M16x1.5	M8x1,25
80	214	35	126	45	51	10	37	40	26	10	M20x1.5	M10x1,5
100	229	40	137	55	53	10	39	40	26	10	M20x1.5	M10x1,5
125	277	47	160	60	71	10	43	54	40	10	M27x2	M12x1,75
160	332	60	180	65	92	-	50	72	-	14	M36x2	M16x2
200	347	70	180	75	97	-	50	72	-	14	M36x2	M16x2
250	389	67	200	95	122	-	52	84	-	21	M42x2	M20x2,5
320	426	82	210	110	134	-	52	96	-	24	M48x2	M24x3

Bore/ Symbol	M	N	O	S	T	U	V	W	X	Z1
32	12	15	G1/8"	45	32.5	12	10	28	4	29
40	12	17.5	G1/4"	52	38	16	13	33	4	29
50	12	20	G1/4"	65	46.5	20	17	38	4	29
63	12	22	G3/8"	76	56.5	20	17	38	4	29
80	15	23	G3/8"	94	72	25	22	43.5	4	29
100	15	26	G1/2"	112	89	25	22	47	4	29
125	20	29	G1/2"	134	110	32	27	53	6	31
160	-	25	G3/4"	180	140	-	36	65	6	56
200	-	25	G3/4"	220	175	-	36	75	6	56
250	-	31	G1"	270	220	-	46	90	10	-
320	-	31	G1"	340	270	-	55	110	10	-

LB



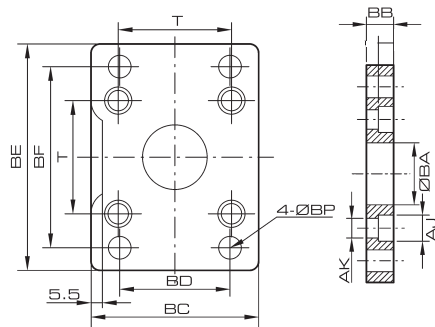
Bore/Symbol	32	40	50	63	80	100	125
AA	32	36	45	50	63	71	90
AB	30	35	40	45	45	55	60
AC	32	36	45	50	63	75	90
AD	32.5	38	46.5	56.5	72	89	110
AE	45	52	65	75	95	115	140
AF	24	28	32	32	41	41	45
AG	11	8	15	13	14	16	18
AH	15.8	17	21.8	21.8	27	26.5	35
AI	4	4	5	5	6	6	8
AJ	142	161	170	186	208	219	250
AK	7	7	9	9	11	11	12.5
AL	7	10	10	10	12	14.5	16.5

DNC Series

Standard Cylinder ISO 15552

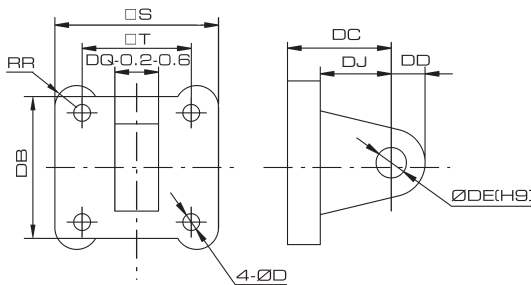
Overall Dimension

FA/FB



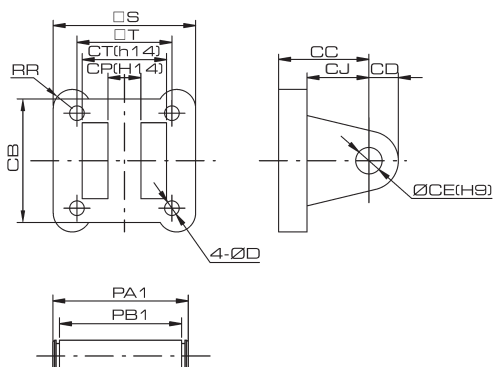
Bore/Symbol	32	40	50	63	80	100	125	160	200
BA	30.3	35.3	40.3	45.3	45.3	55.3	60.3	65.5	75.5
BB	10	10	12	12	16	16	20	20	25
BC	45	52	65	76	94	112	140	180	220
BD	32	36	45	50	63	75	90	115	135
BE	80	90	110	120	150	175	224	280	320
BF	64	72	90	100	126	150	180	230	270
AJ	10.5	10.5	13.5	13.5	16.5	16.5	19	25	25
AK	6.5	6.5	8.5	8.5	10.5	10.5	12.5	17	17
BP	7	9	9	9	12	14	16	18.5	24
T	32.5	38	46.5	56.5	72	89	110	140	175

CA



Bore/Symbol	32	40	50	63	80	100	125	160	200
S	45	52	65	76	94	112	140	180	220
T	32.5	38	46.5	56.5	72	89	110	140	175
RR	6.5	6.5	9	9.5	11	11.5	12	-	-
DB	34	41	54	65	83	101	123	-	-
DC	22	25	27	32	36	41	50	55	60
DD	10	11	13	16	16	20	25	30	30
DE	10	12	12	16	16	20	25	30	30
DQ	26	28	32	40	50	60	70	89.7	89.7
D	6.5	6.5	8.5	8.5	10.5	10.5	12.5	-	-
DJ	14	17	17	22	24	25	30	35.5	36

CB



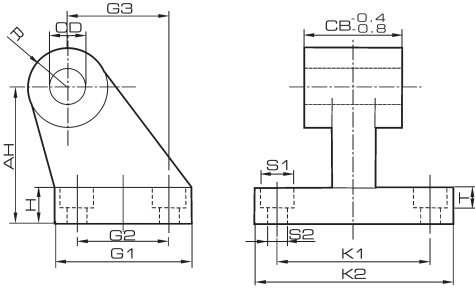
Bore/Symbol	32	40	50	63	80	100	125	160	200
S	45	52	65	76	94	112	140	180	220
T	32.5	38	46.5	56.5	72	89	110	140	175
D	6.5	6.5	8.5	8.5	10.5	10.5	12.5	-	-
CJ	14	17	17	22	24	25	30	35.5	36
RR	6.5	6.5	9	9.5	11	11.5	12	-	-
CB	34	41	54	65	83	101	123	-	-
CC	22	25	27	32	36	41	50	55	60
CD	10	11	13	16	16	20	25	30	30
CE	10	12	12	16	16	20	25	30	30
CP	26	28	32	40	50	60	70	90	90
CT	45	52	60	70	90	110	120	170	170
PA1	53	60	68	78	100	120	130	181	181
PB1	46.5	53.5	61.5	71.5	91.5	111.5	121.5	170.5	170.5

DNC Series

Standard Cylinder ISO 15552

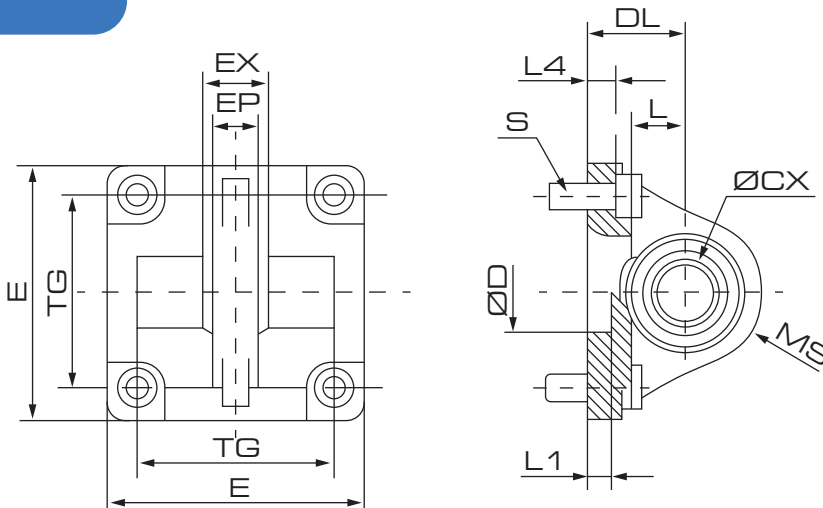
Overall Dimension

SDB



Bore/Symbol	32	40	50	63	80	100	125
AH	32	36	45	50	63	71	90
H	8	10	12	12	14	15	20
CD	10	12	12	16	16	20	25
G1	31	35	45	50	60	70	90
G2	18	22	30	35	40	50	60
G3	21	24	33	37	47	55	70
CB	26	28	32	40	50	60	70
K1	38	41	50	52	66	76	94
K2	51	54	65	67	86	96	124
S1	11	11	14	14	17	17	20
S2	6.6	6.6	9	9	11	11	14
T	1.6	1.6	1.6	1.6	2.5	2.5	3.2
R	10	11	13	15	15	19	22.5

RB



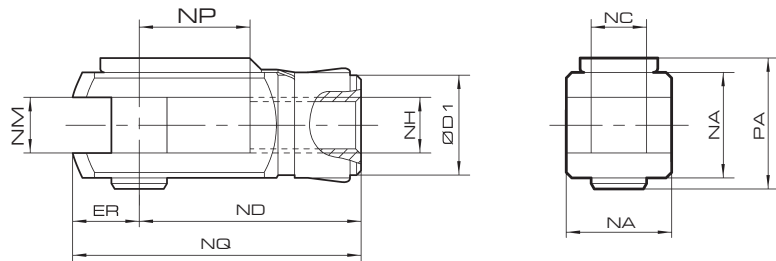
Symbol/Bore	32	40	50	63	80	100
TG	32.5	38	46.5	56.5	72	89
ØCK	10	12	16	16	20	20
DL	22	25	27	32	36	41
L	12	15	15	20	20	25
EX	14	16	21	21	25	25
EP	10.5	12	15	15	18	18
S	M6X20	M6X20	M8X20	M8X20	M10X25	M10X25
L4	5.5	5.5	6.5	6.5	10	10
D	30	35	40	45	45	55
L1	7	7	7	7	9	9
E	45	52	65	75	95	115
MS	16	18	21	23	28	30

DNC Series

Standard Cylinder ISO 15552

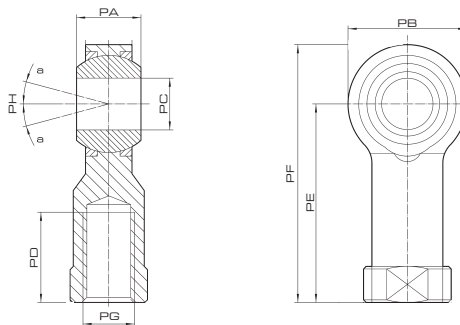
Overall Dimension

Y



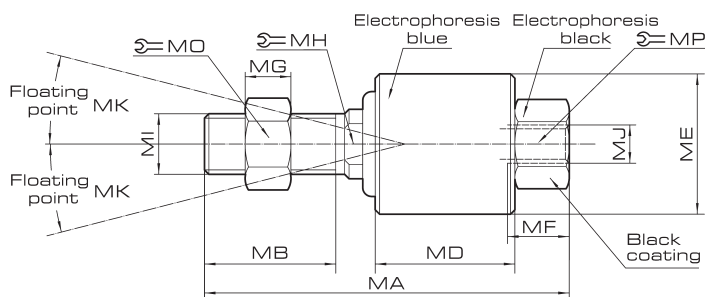
Bore/Symbol	NH	NA	ND	NM	NQ	NC	D1	ER	PA	NP
32	M10x1.25	18	40	10	52	10	18	12	25	20
40	M12x1.25	24	48	12	62	12	20	14	29	24
50/63	M16x1.5	32	63	16	83	16	27	20	38	33
80/100	M20x1.5	40	80	20	105	20	35	25	47	41
125	M27x2	55	112	30	148	30	48	36	65	54
160	M36x2	70	144	-	191	35	60	47	80	72
200	M36x2	70	144	-	191	35	60	47	80	72

B



Bore/Symbol	PC	PG	PB	PA	PE	PD	PF	PH
32	10	M10X1.25	28	14	43	20	57	13
40	12	M12X1.25	32	16	50	22	66	13
50 / 63	16	M16X1.5	40	21	64	28	84	13
80 / 100	20	M20X1.5	50	25	77	33	102	13
125	27	M27X2	66	35	103	41	136	13
160	35	M36X2	80	43	125	56	165	16
200	35	M36X2	80	43	125	56	165	16

F



Bore/Symbol	MA	MB	MD	ME	MF	MG	MH	MI	MJ	MK	MP	MO
32	59.5	21	22	26	10	6	8	M10X1.25	M10X1.25	12	17	17
40	64.5	21	24	32	10	7	12	M12X1.25	M12X1.25	12	19	19
50 / 63	90	27	36	45	15	8	17	M16X1.5	M16X1.5	12	27	24
80 / 100	102.5	29	40	53	20	10	22	M20X1.5	M20X1.5	10	32	30