

## VCA

*Pneumatic Coaxial Valve*

---

# VCA Series

Pneumatic Coaxial Valve

**AKME**  
SOLUÇÕES EM AUTOMAÇÃO



## Ordering Code

VCA

Series

15

Port Size

10: 1/8"	15: 1/2"
20: 3/4"	25: 1"
32: 1 1/4"	40: 1 1/2"
50: 2"	

## Applications

Food & Beverage  
Air Separation  
Filling Operation  
Ceramic Molding  
Semi-conductor Clearing  
Automobile  
Others

## Specification

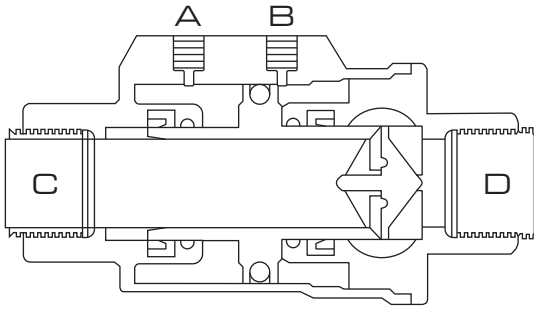
Model	Description
Operating pressure	0-16 Bar (0-232 PSI)
Control pressure	3-8 Bar (43.5 - 116 PSI)
Control medium	Filtred compressed air or neutral gas
Body material	CF8
Seal material	FPM
Applicable medium	FKM-Suitable for most fluid, except for steam
Medium temperature	-20°C ~ 150°C (FPM)
Ambient temperature	-20°C ~ 80°C
Control type	Normally closed
Connection type	Threaded connection (BSP)
Leakage class	DIN EN 12266 Class A

## Dimension

Size	Interface	Orifice mm	Flow value Kv (m <sup>3</sup> /h)	Differential pressure range MPa	Control Pressure MPa
DN10	G3/8"	10	3.2	0-1.6	0.3-0.5
DN15	G1/2"	15	6.4	0-1.6	0.4-0.5
DN20	G3/4"	20	8.9	0-1.6	0.4-0.5
DN25	G1"	25	13.7	0-1.6	0.3-0.7
DN32	G1 1/4"	32	21.6	0-1.6	0.3-0.7
DN40	G1 1/2"	40	36.5	0-1.6	0.3-0.7
DN50	G2"	50	55.0	0-1.6	0.5-0.7

# VCA Series

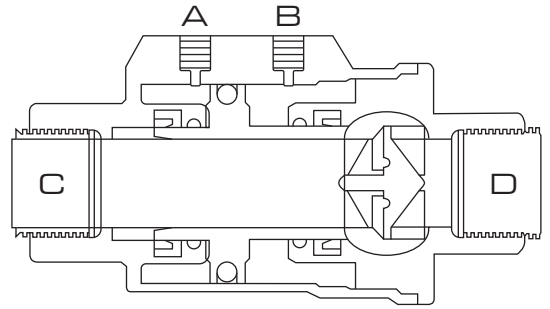
## Pneumatic Coaxial Valve



### Closing

When hole "A" is supplied with air (hole "B" must be discharging), the piston moves towards and eventually presses onto the seat, thereby closing the valve.

For a single acting N.C. shuttle valve, a spring is installed in "A" chamber, pressing the piston against seat seal and allowing the valve to remain closed in its idle state.



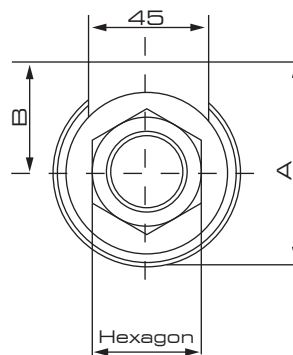
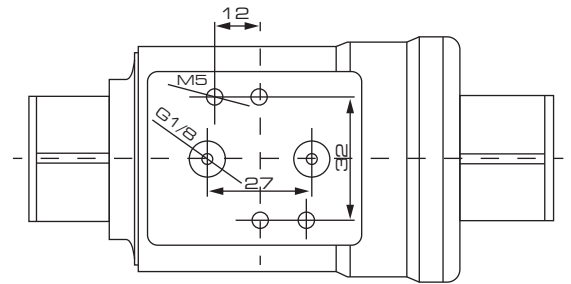
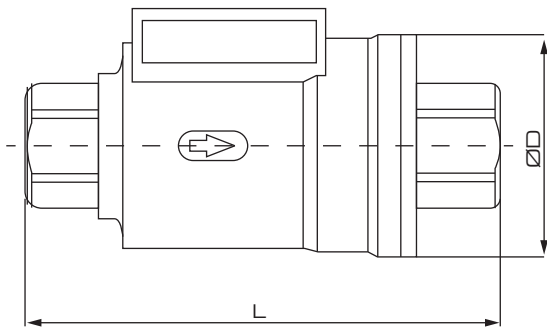
### Opening

When hole "B" is supplied with air (hole "A" must be discharging), the piston moves towards "C" and away from seat seal, thereby opening the valve.

For a single acting N.O. shuttle valve, a spring is installed in "B" chamber, forcing the piston away from seat seal and allowing the valve to remain open in its idle state.

## Overall Dimension

### VCA Series



## Main Dimension

Size	DN10	DN15	DN20	DN25	DN32	DN40	DN50
Thread end	3/8"	1/2"	3/4"	1"	1 1/4"	1 1/2"	2"
A (mm)	56	59	72	78	94	104	116
ØD (mm)	46	52	64	69	86	96	108
Hexagon (mm)	22	26.5	32	41	50	56	70
B (mm)	33	35	40	43	51	56	62
L (mm)	98	112	135	143	165	180	207
Weight (Kg)	0.76	0.94	1.43	1.85	2.98	3.66	5.64