



KLJZF

Angle Seat Valve

KLJZF Series

Angle Seat Valve

AKME
SOLUÇÕES EM AUTOMATIZAÇÃO



Ordering Code

KLJZF

Series Code

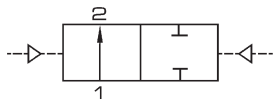
KLJZF: Stainless Steel Angle Valve

15

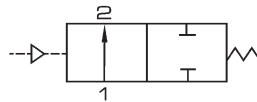
Orifice

15: 1/2" , 20: 3/4" , 25: 1"
32: 1.1/4" , 40: 1.1/2" , 50: 2"
65: 2.1/2" , 80: 3"

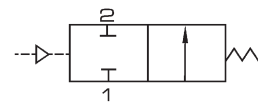
Symbol



Double function type



Normal close type



Normal open type

Specification

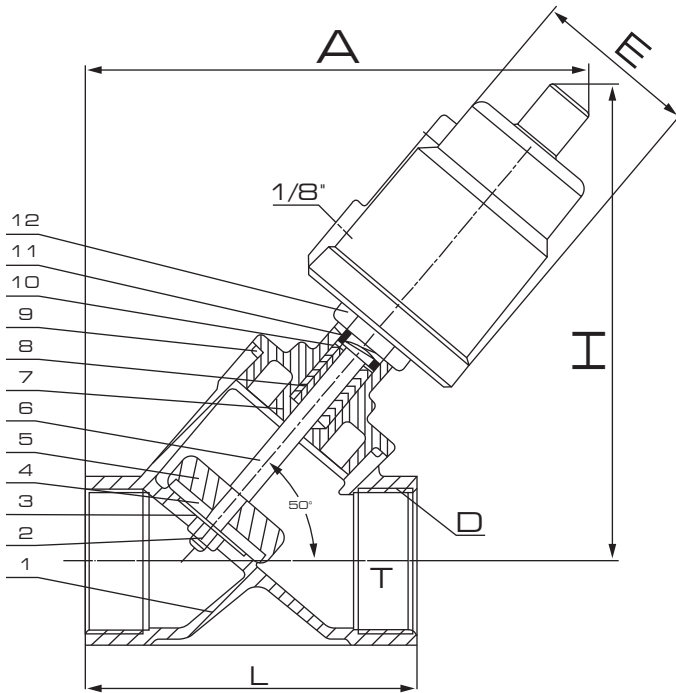
Model	KLJZF
Connection Size	DN15 - DN80
Screw	1/2" ~ 3"
Material of Body	Stainless Steel 316/304
Acting Device Material	Stainless Steel 304
Valve Core Seal	PTFE / FPM
Valve Rod Seal	PTFE / FPM
Piston Seal	FPM / NBR
Suitable Medium	Water, Neutral Air (or liquid), Alcohol, Oil, Organic liquid, Steam, Weak Acid or alkalescence
Medium Temperature	PTFE: -10 °C ~ +180 °C
Stickiness	Max. 600 mm ² / sec.
Installation	Follow flow installation
Control Medium	Air / Neutral Air
Controlled Pressure Range	3 ~ 8 Bar
Working-pressure	0 ~ 16 Bar

KLJZF Series

Angle Seat Valve

Overall Dimension

KLJZF Series



Size	L	T	D	A	H	E	Actuator
15	68	12	1/2	130	128	60	ø50
20	75	14	3/4	140	133	60	ø50
25	90	18	1	170	165	75	ø63
32	110	18	1 1/4	180	175	75	ø63
40	115	18	1 1/2	190	178	75	ø63
50	135	20	2	220	210	95	ø80
65	182	24	2 1/2	300	300	116	ø100
80	205	28	3	335	320	116	ø100

No.	Name	Material
12	Plastic steel pneumatic device	PPS
11	Spring	60S12Mn
10	Metal pads	304
9	Body Seal	PTFE
8	Stem Seal	PTFE
7	Connecting Piece	CF8/CF8M
6	Stem	304/316
5	Valve Core	304/316
4	Seat	PTFE
3	Gasket	304/316
2	Nut	304/316
1	Body	CF8/CF8M

Overall Dimension

DN	RC	L	L1	SW	H	D	Acting Device
10	3/8"	55	17	21	120	51	40
15	1/2"	70	21	26.5	138	51	40
20	3/4"	76	23	32	154	62	50
25	1"	90	25	40	168	62	50
32	1 1/4"	116	32	50	200	76	63
40	1 1/2"	116	32	55.5	215	92	80
50	2"	138	40	68.5	230	92	80
65	2 1/2"	168	51	85	268	117	100
80	3"	192	54	100	325	140	125

Parts

2.01 Bolt	3.1 Valve body	4.1 Spring
2.02 Hole plate sealing	3.2 O-ring seal	4.2 Piston
2.03 Sealing disk	3.3 Threed connecting accessory	4.3 O-ring
2.04 Valve disk	3.4 Cylinder	4.4 Valve Cover
2.5 Valve spool	3.5 Decorating Cover	4.5 O-ring
2.6 V Shape material	-	4.6 Pressure receipt ring
2.7 Spring	-	-