



DAR

1000 ~ 5000 Regulator

DAR Series

1000 ~ 5000 Regulator

AKME
SOLUÇÕES EM AUTOMAÇÃO



DAR-DC

- Optional : Padlock for regulated pressure lock. After adjusting the pressure, press the handle down and lock it with the padlock



Ordering Code

DA

Series

DAR2000-02



DAR4000-04



R

Function

Regulator

4000

Specification

1000

2000

3000

4000

5000

04

Port Size

M5: M5 x 0.8

02: G1/4"

03: G3/8"

04: G1/2"

06: G3/4"

10: G1"

C

-

Blank: Standart

C: With Padlock

Specification

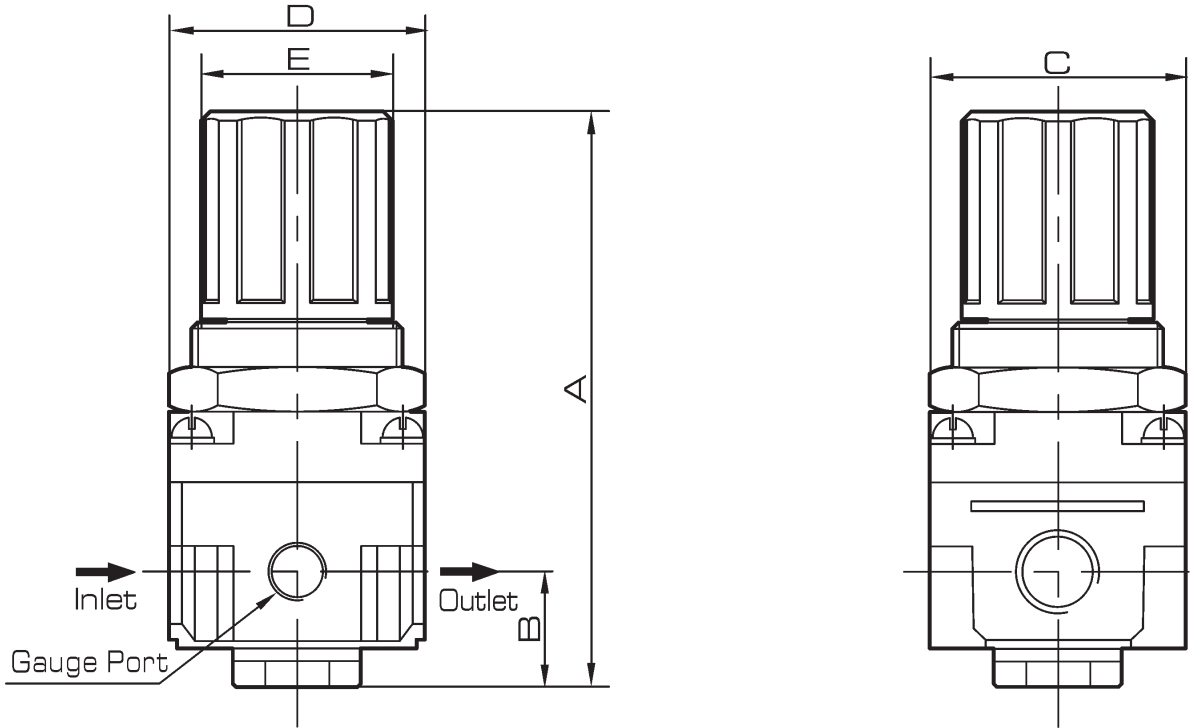
Model	DAR1000-M5	DAR2000-02	DAR3000-03	DAR4000-04	DAR4000-06	DAR5000-10
Rated Flow (l/min)	110	550	2500	6000	6000	8000
Port Size	M5	1/4	3/8	1/2	3/4	1
Max. Inlet Pressure	10 Bar					
Range of Adjustable Pressure	0 ~ 7 Bar	0 ~ 8 Bar				
Operating Temperature Range	5 ~ 60 °C					
Valve Type	With Overflow					

DAR Series

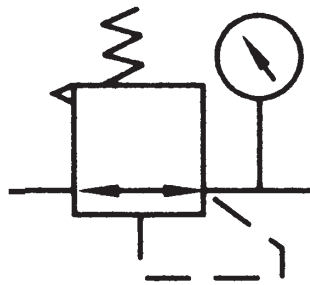
1000 ~ 5000 Regulator

Overall Dimension

DAR1000~DAR5000



Symbol



Dimension

Model	Bore	A	B	C	D	E
DAR1000-M5	M5	61.5	11	25	25	28
DAR2000-02	1/4	95	17	40	40	34
DAR3000-03	3/8	127.5	35	53	53	40
DAR4000-04	1/2	149.5	37.5	70	70	54
DAR4000-06	3/4	154	40.5	70	75	54
DAR5000-10	1	168	48	90	90	54