

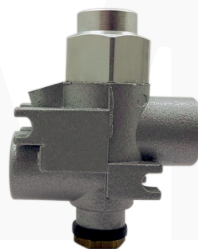
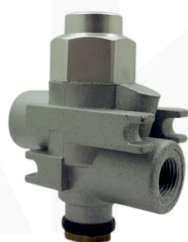
AM

Pilot operated Check Valve

AM Series

Pilot operated Check Valve

AKME
SOLUÇÕES EM AUTOMAÇÃO



Ordering Code

AM-55

Specification

AM-55: pilot operated check valve

00

Ports

00: 1/8"

01: 1/4"

03: 3/8"

04: 1/2"

Specification

Model	AM-5500	AM-5501	AM-5503	AM-5504
Symbol				
Function	Unidirectional			
Ports	G 1/8"	G 1/4"	G 3/8"	G 1/2"
Capacity NI/min	620	620	2100	3500
Ømm	6,5	6,5	9,5	15
Pressure bar	1,5 ÷ 10			
Mass kg	0,110	0,110	0,150	0,360

Unidirectional blocking valves are safety devices which can block the cylinder rod when, accidentally, the pressure fails.
Bidirectional blocking valves are used to block the cylinder rod when the bistable 5/2 valve that control it has deenergized pilots.
In this case the 5/3 function is obtained.

Max. Working pressure: 10 bar
Ambient and fluid temperature: -20 ÷ +180 °C
Fluid temperature: 50°C max

Body: die-cast zamak
Oil proof seals
Fluid: Filtered air with or without lubrication

■ Unidirectional:

- **Functioning:** The valve in rest position allows the air flow from 2 to 1: air flows from 1 to 2 only when it receives the control signal.
- **Use:** When mounted on the cylinder (opening 1 connected to the cylinder) the valve blocks the cylinder when pressure accidentally fails.

■ Bidirectional:

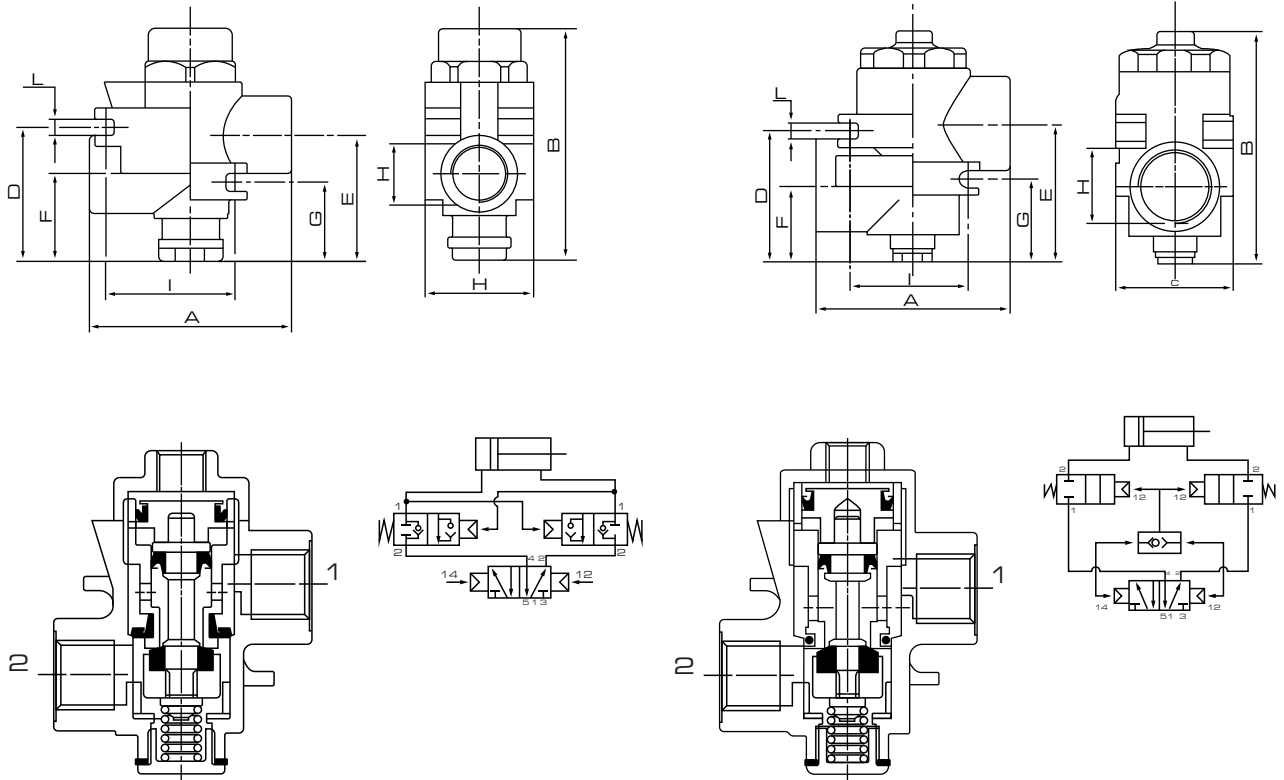
- **Functioning:** The valve allows the air flow from 2 to 1 (or from 1 to 2) only when it receives the control signal
- **Use:** When mounted on the cylinder openings it allows the 3 position operation (closed centres) although a 5/2 valve controls the cylinder. This is reached by connecting the opening 2 to the cylinder, the opening 1 to the 5/2 valve and controlling the two valves at the same time through an OR. The OR inputs must be connected to the control impulses of the 5/2 valve.

AM Series

Pilot operated Check Valve

Overall Dimension

AM Series



Dimension

A	B	C	D	E	F	G	H	I	L
46	58	24	31	29	20	18,5	G 1/8 G 1/4	31	4,25
50	65	28	35	38	21	24,5	G 1/4 G 3/8	37	5,25
67	81	40	46	48	27	28,5	G 1/2	42	6,25