



# ADVU

*Compact Cylinder*

---

# ADVU Series

Compact Cylinder

**AKME**  
SOLUÇÕES EM AUTOMAÇÃO



## Ordering Code

<b>ADVU</b>	<b>50</b>	<b>80</b>	<b>A</b>	<b>PA</b>	<b>-</b>	<b>-</b>	<b>-</b>	<b>-</b>
Series	Bore	Stroke	Thread	Magnet	Piston rod Material	Seal Type	Version	Extension
ADVU : Double Action	16mm -100mm		Blank: Female Thread A: Male Thread	PA: Magnet	Blank: Steel SAE 1045 I: Stainless Steel	Blank: Buna N V: Viton	Blank : Basic Version S2: Double Shaft	Blank: Standard PH XX : Extension rod PR: Extension Thread
ADVUL : Double Action, non-rotating								
AEVU : Single Action, Retracted								
AEVUZ : Single Action, Extended								

## Specification

Bore (mm)	16	20	25	32	40	50	63	80	100
Operation	Double Acting								
Working Medium	Air								
Ensure Pressure Resistance	10 Bar								
Operating Pressure Range	0~8 Bar								

## Feature

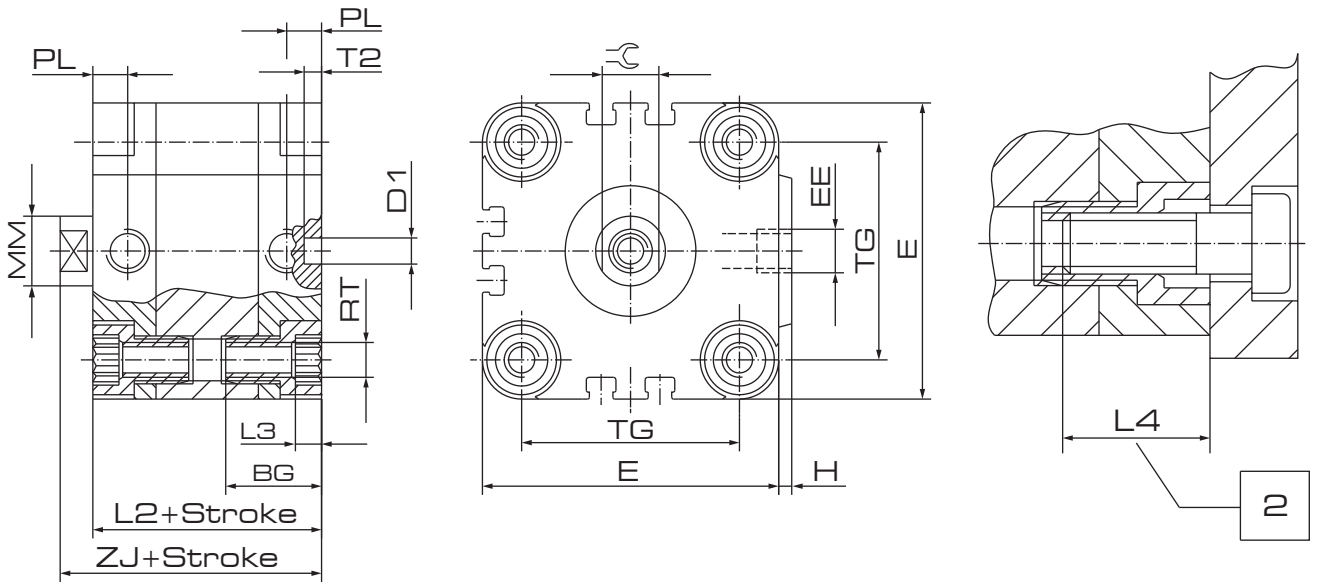
1. 50% less installation space than comparable ISO cylinders to ISO 15552
2. Piston rod with internal or external thread
3. Wide range of variants for customized applications
4. Magnetic piston for position sensing

# ADVU Series

Compact Cylinder

## Overall Dimension

### ADVU Series



## Dimension

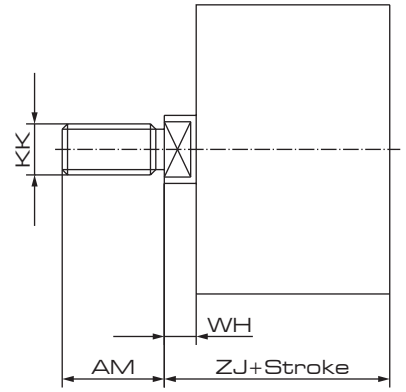
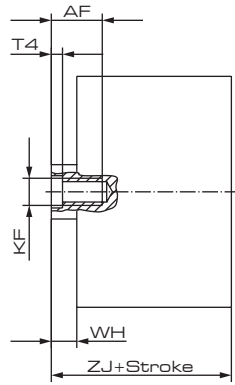
Ø [mm]	BG	D1 Ø H9	E	EE	H	L2	L3	L4	MM Ø	PL	RT	T2	TG	ZJ	1
16	18.5	6	29	M5	1	38	3	16	8	8	M4	4	18	42.5	7
20	18.5	6	36	M5	1.5	38	4	18	10	8	M5	4	22	42.5	9
25	18.5	6	40	M5	1.5	39.5	4	18	10	8	M5	4	26	45	9
32	21.5	6	50	G1/8	2	44.5	5	20	12	8	M6	4	32	50.5	10
40	21.5	6	60	G1/8	2.5	45.5	5	20	12	8	M6	4	42	52	10
50	22	6	68	G1/8	3	45.5	6	20	16	8	M8	4	50	53	13
63	24.5	8	87	G1/8	4	50	8	25	16	8	M10	4	62	57.5	13
80	27.5	8	107	G1/8	4	56	8	25	20	8.5	M10	4	82	64	17
100	32.5	8	128	G1/4	5	66.5	8	25	25	10.5	M10	4	103	76.5	22

# ADVU Series

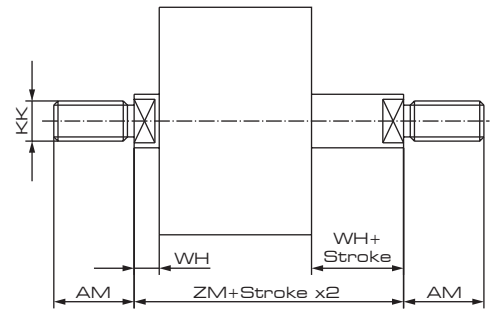
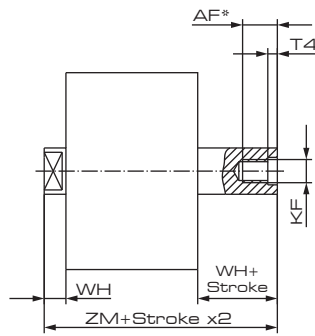
Compact Cylinder

## Overall Dimension

### ADVU Basic version Variants



### ADVU - S2



## Dimension

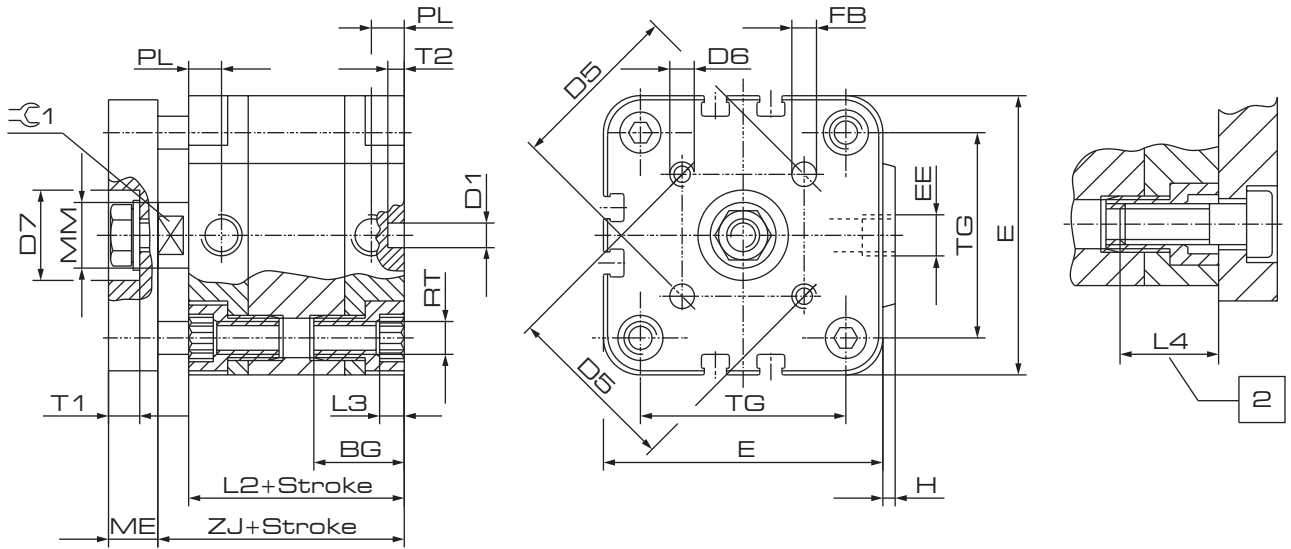
Ø [mm]	AF	AM	D8	D9 Ø	KF	KK	T4	WH	ZJ	ZM
16	10	20	-	3.2	M4	M8	1.5	4.5	42.5	47
20 <sup>2)</sup>	12	22	-	3.8	M5	M10x1.25	2	4.5	42.5	47
25 <sup>2)</sup>	12	22	-	3.8	M5	M10x1.25	2	5.5	45	50.5
32 <sup>2)</sup>	14	22	-	4.5	M6	M10x1.25	2.6	6	50.5	56.5
40 <sup>2)</sup>	14	22	-	4.5	M6	M10x1.25	2.6	6.5	52	58.5
50 <sup>2)</sup>	16	24	-	6	M8	M12x1.25	3.3	7.5	53	60.5
63 <sup>2)</sup>	16	24	-	6	M8	M12x1.25	3.3	7.5	57.5	65
80 <sup>2)</sup>	20 <sup>1)</sup>	32	G1/8	8	M10	M16x1.5	4.7	8	64	72
100 <sup>2)</sup>	24 <sup>1)</sup>	40	G1/4	11.7	M12	M20x1.5	6.1	10	76.5	86.5

# ADVU Series

Compact Cylinder

## Overall Dimension

### ADVUL Series



## Dimension

Ø [mm]	BG <sup>1)</sup>	D1 Ø H9	D5	D6	D7 Ø H9	E	EE	FB Ø H8	H	L2
16	18.5	6	14	M3	–	29	M5	3	1	38
20	18.5	6	17	M4	–	36	M5	4	1.5	38
25	18.5	6	22	M5	14	40	M5	5	1.5	39.5
32	21.5	6	28	M5	17	50	G1/8	5	2	44.5
40	21.5	6	33	M5	17	60	G1/8	5	2.5	45.5
50	22	6	42	M6	22	68	G1/8	6	3	45.5
63	24.5	8	50	M6	22	87	G1/8	6	4	50
80	27.5	8	65	M8	28	107	G1/8	8	4	56
100	32.5	8	80	M10	30	128	G1/4	10	5	66.5

Ø [mm]	L3	L4	ME	MM Ø	PL	RT	T1 +0.2	T2 –0.2	TG	1 h13
16	3	16	6	8	8	M4	–	4	18	7
20	4	18	8	10	8	M5	–	4	22	9
25	4	18	8	10	8	M5	4.8	4	26	9
32	5	20	10	12	8	M6	6.1	4	32	10
40	5	20	10	12	8	M6	6.1	4	42	10
50	6	20	12	16	8	M8	7.6	4	50	13
63	8	25	12	16	8	M10	7.6	4	62	13
80	8	25	14	20	8.5	M10	8.7	4	82	17
100	8	25	14	25	10.5	M10	10.3	4	103	22