

4V100

Solenoid Valve, Air Pilot Valve

4V100 Series

Solenoid Valve, Air Pilot Valve

AKME
SOLUÇÕES EM AUTOMAÇÃO



Ordering Code

4V

1

10

06

AC220V

Specification

4V: 5/2 (3) way solenoid valve

4A: 5/2 (3) way air pilot valve

3V: 3/2 way solenoid valve

3A: 3/2 way air pilot valve

Series Code

1:100 Series

Coil and Type

10: Single coil

20: Double coil

30C: Mid-position closed

30E: Mid-position exhausted

30P: Mid-position pressed

Port Size

06: 1/8"

Standard Voltage

DC12V

DC24V

AC24V

AC110V

AC220V

Specification

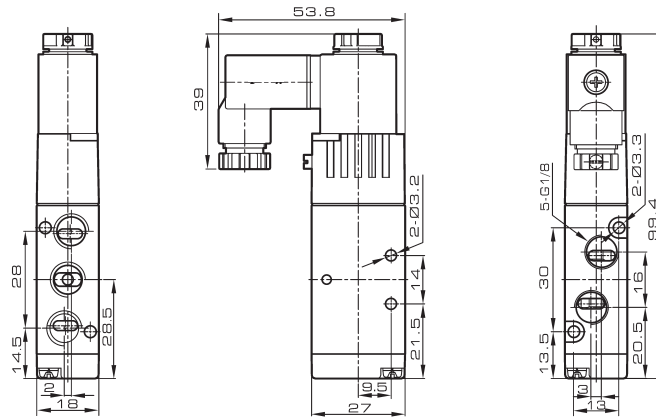
Valve Type	3/2 way - 5/2 way	5/3 way
Rated Flow (l/min)	660	492
Port Size	Inlet, Outlet, Exhaust Port = G 1/8"	
Working Medium	40 Micron Filtered Air	
Operation	Internal piloted	
Working pressure	1,5 ~ 8 Bar	
Max. Test Pressure	12 Bar	
Ambient Temperature	-20 ~ 70°C	
Operating Voltage Tolerance	± 10%	
Power Consumption	AC: 5.5VA DC: 4.8W	
Connector Protection	F Class, IP 65	
Connector	DIN Connector	
Switching Frequency	5 Cycles / Sec.	
Response Time	0.05 Sec.	
Coil	4V110 COIL DC12V/ 4V110 COIL DC24V/ 4V110 COIL AC24V/ 4V110 COIL AC110V/ 4V110 COIL AC220V	

4V100 Series

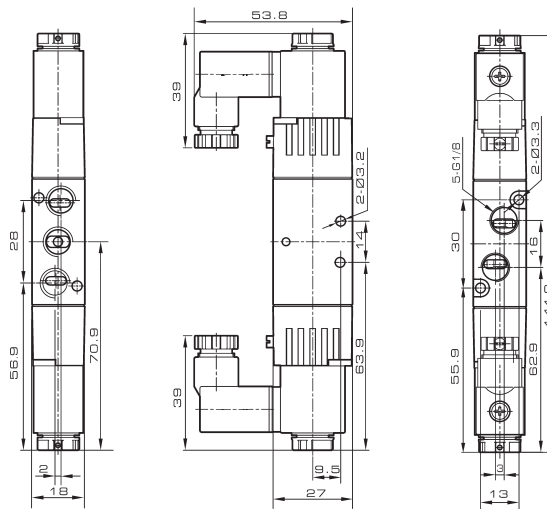
Solenoid Valve, Air Pilot Valve

Overall Dimension

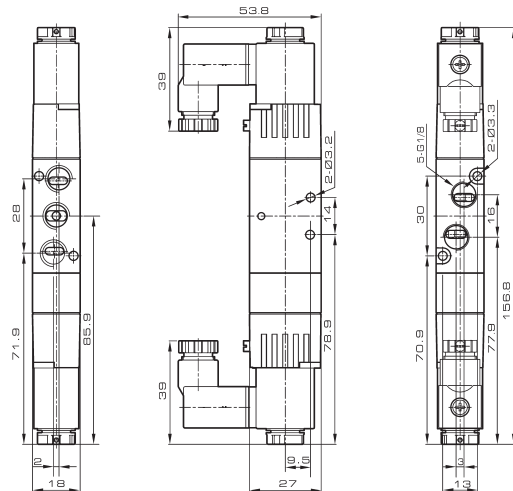
4V110-06



4V120-06



4V130-06

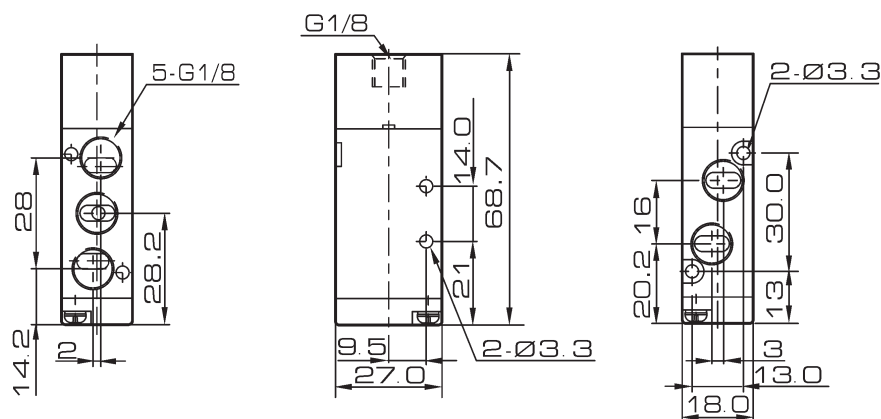


4V100 Series

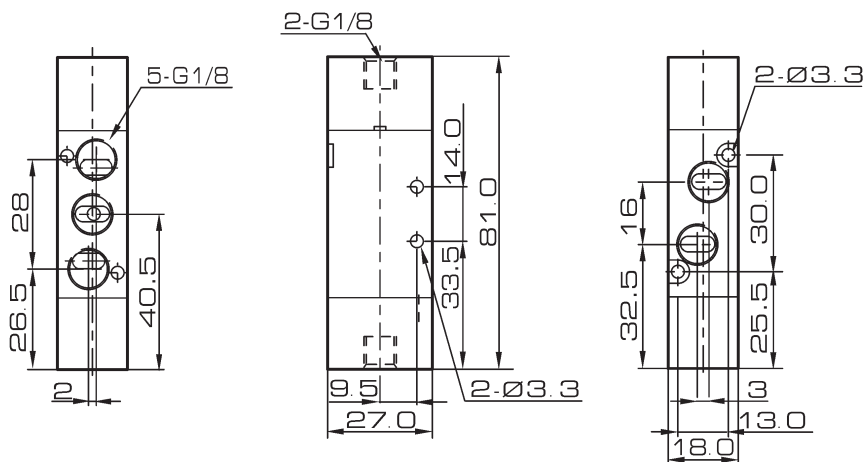
Solenoid Valve, Air Pilot Valve

Overall Dimension

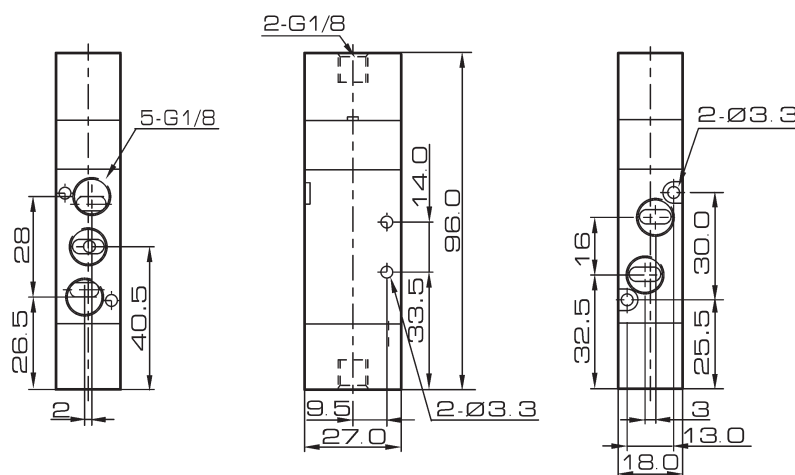
4A110-06



4A120-06



4A130-06

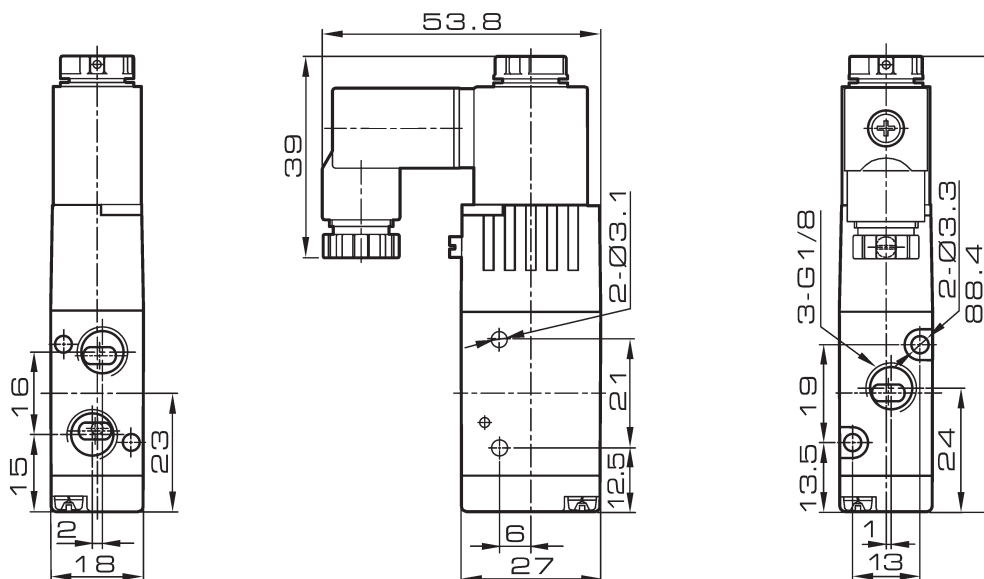


4V100 Series

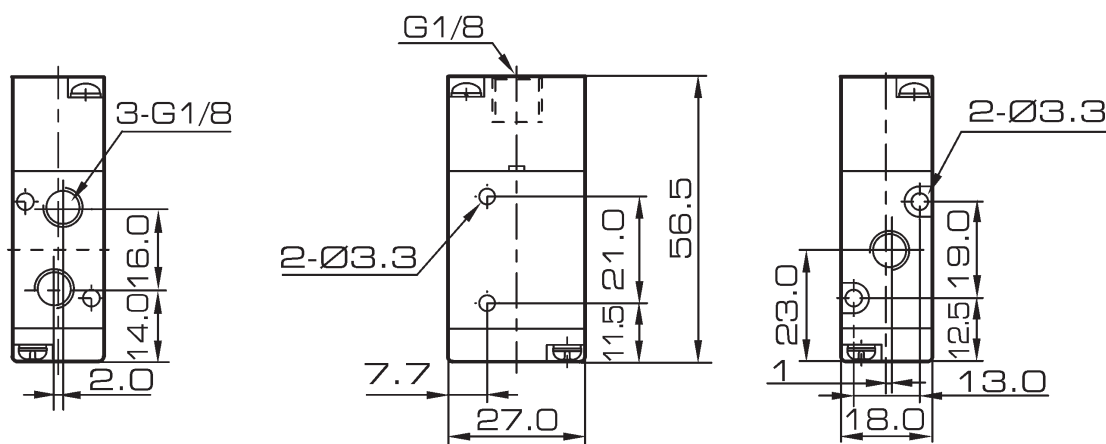
Solenoid Valve, Air Pilot Valve

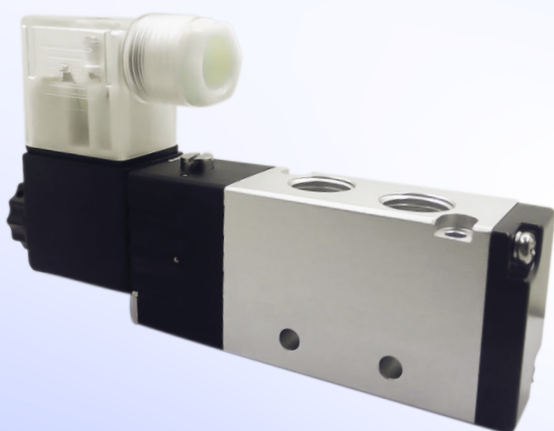
Overall Dimension

3V110-06



3A110-06





4V200

Solenoid Valve, Air Pilot Valve

4V200 Series

Solenoid Valve, Air Pilot Valve



Ordering Code

4V	2	10	08	AC220V
Specification	Series Code	Coil and Type	Port Size	Standard Voltage
4V: 5/2 (3) way solenoid valve	2:200 Series	10: Single coil	06: 1/8"	DC12V
4A: 5/2 (3) way air pilot valve		20: Double coil	08: 1/4"	DC24V
3V: 3/2 way solenoid valve		30C: Mid-position closed		AC24V
3A: 3/2 way air pilot valve		30E: Mid-position exhausted		AC110V
		30P: Mid-position pressed		AC220V

Specification

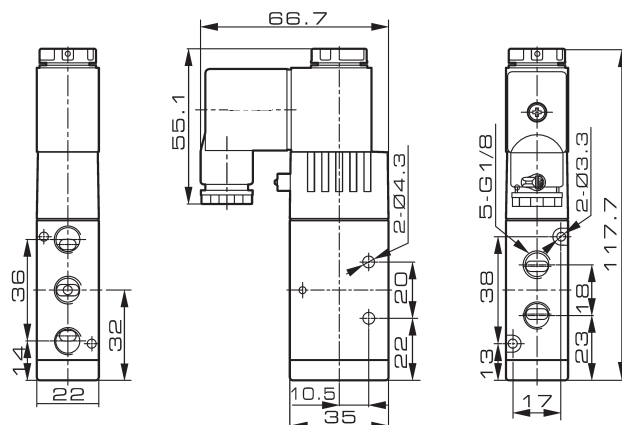
Valve Type	3/2 way - 5/2 way	5/3 way	3/2 way - 5/2 way	5/3 way
Rated Flow (l/min)	768	660	875	660
Port Size	Inlet, Outlet, Exhaust Port = G 1/8"		Inlet, Outlet = G 1/4", Exhaust Port = G 1/8"	
Working Medium	40 Micron Filtered Air			
Operation	Internal piloted			
Working pressure	1,5 ~ 8 Bar			
Max. Test Pressure	12 Bar			
Ambient Temperature	-20 ~ 70°C			
Operating Voltage Tolerance	± 10%			
Power Consumption	AC: 5.5VA DC: 4.8W			
Connector Protection	F Class, IP 65			
Connector	DIN Connector			
Switching Frequency	5 Cycles / Sec.			
Response Time	0.05 Sec.			
Coil	4V210 COIL DC12V/ 4V210 COIL DC24V/ 4V210 COIL AC24V/ 4V210 COIL AC110V/ 4V210 COIL AC220V			

4V200 Series

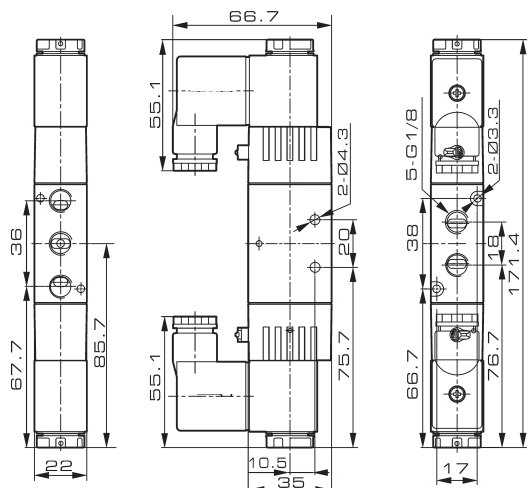
Solenoid Valve, Air Pilot Valve

Overall Dimension

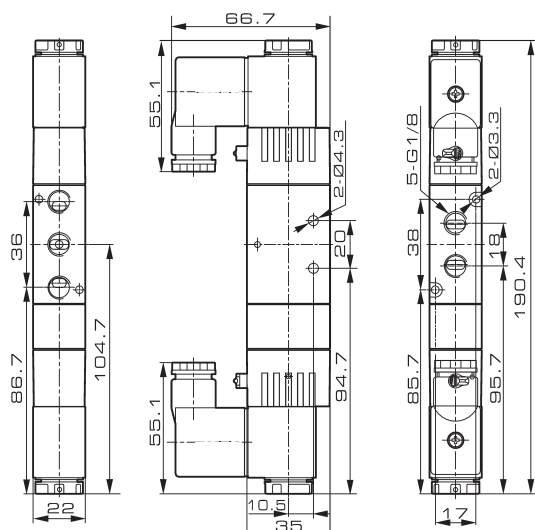
4V210-06



4V220-06



4V230-06

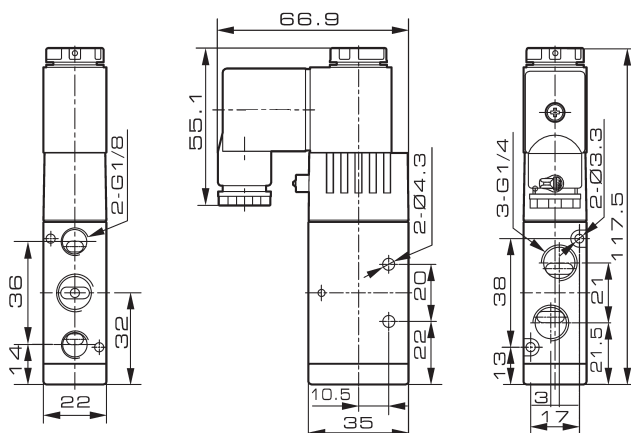


4V200 Series

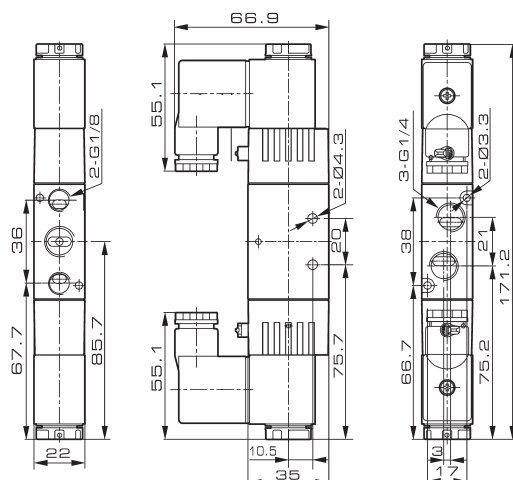
Solenoid Valve, Air Pilot Valve

Overall Dimension

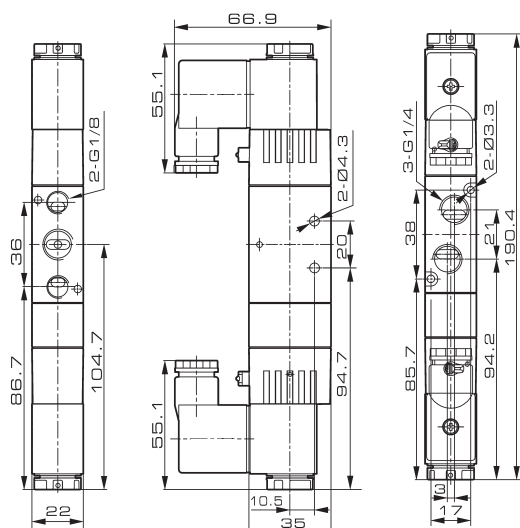
4V210-08



4V220-08



4V230-08

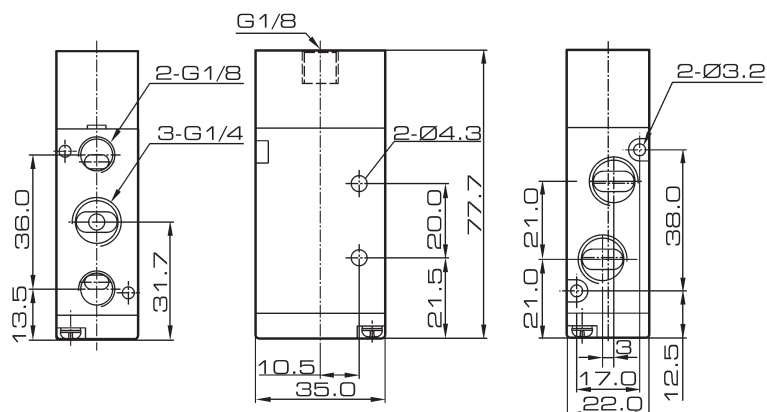


4V200 Series

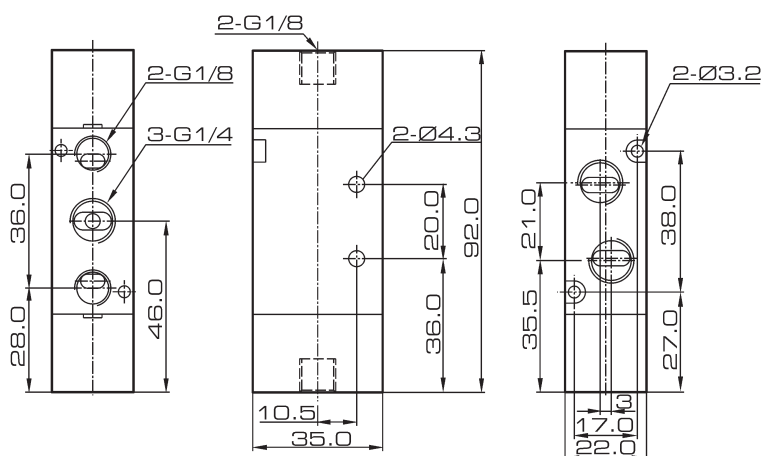
Solenoid Valve, Air Pilot Valve

Overall Dimension

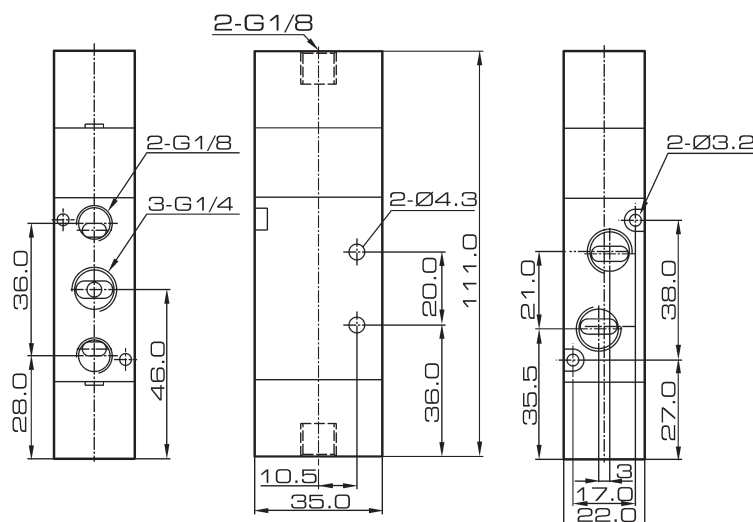
4A210-08



4A220-08



4A230-08

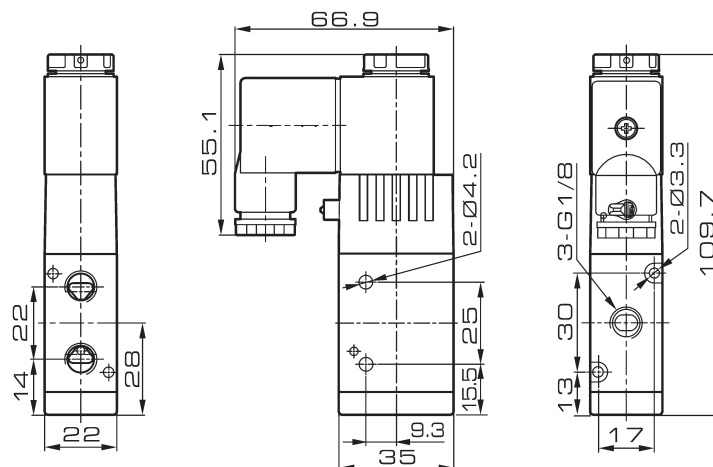


4V200 Series

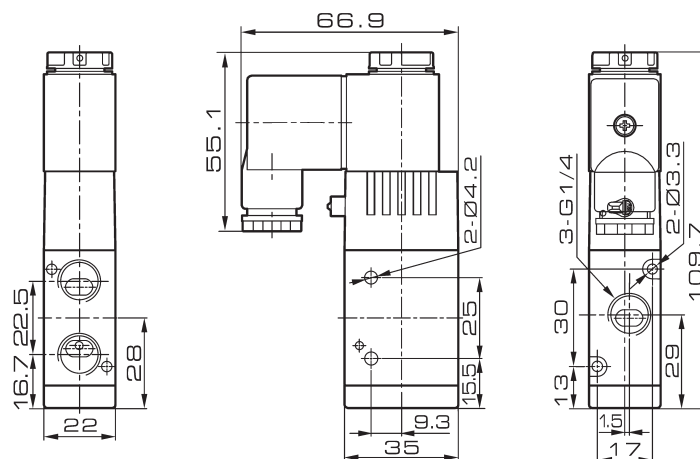
Solenoid Valve, Air Pilot Valve

Overall Dimension

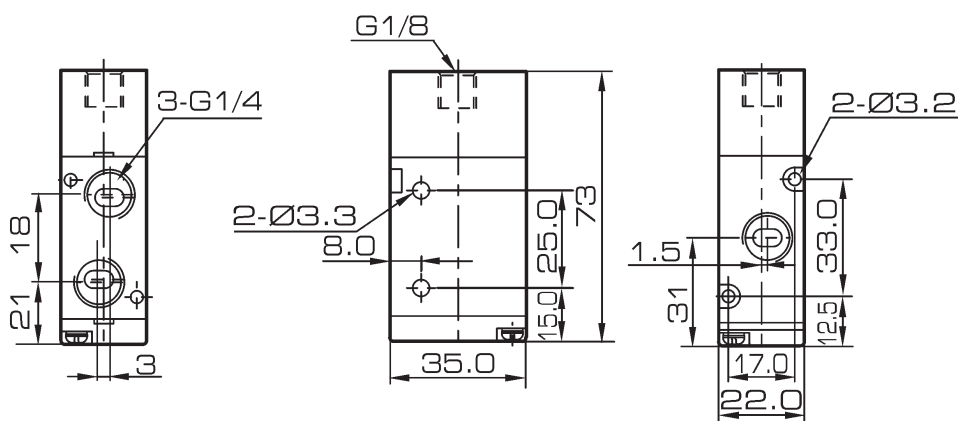
3V210-06

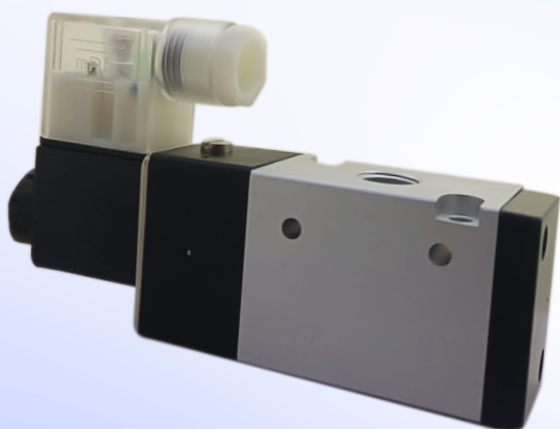


3V210-08



3A210-08





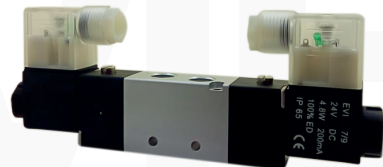
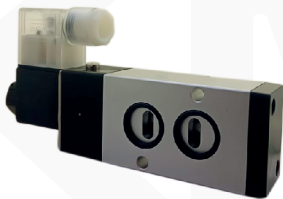
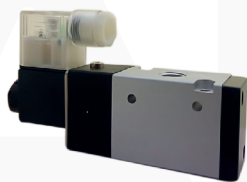
4V300

Solenoid Valve, Air Pilot Valve

4V300 Series

Solenoid Valve, Air Pilot Valve

AKME
SOLUÇÕES EM AUTOMAÇÃO



Ordering Code

4V	3	10	10	B	AC220V
Specification	Series Code	Coil and Type	Port Size	Type	Standard Voltage
4V: 5/2 (3) way solenoid valve	3:300 Series	10: Single coil	08: 1/4"	Blank: Threaded	DC12V
4A: 5/2 (3) way air pilot valve		20: Double coil	10: 3/8"	B: Sub-plated mounted (for 5/2,5/3 way only)	DC24V
3V: 3/2 way solenoid valve		30C: Mid-position closed			AC24V
3A: 3/2 way air pilot valve		30E: Mid-position exhausted			AC110V
		30P: Mid-position pressed			AC220V

Specification

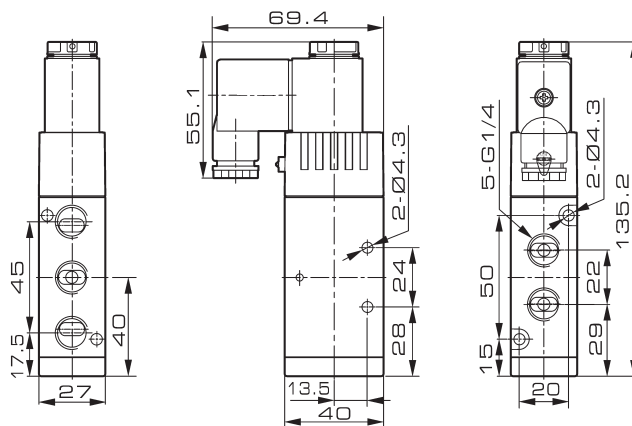
Valve Type	3/2 way - 5/2 way	5/3 way	3/2 way - 5/2 way	5/3 way
Rated Flow (l/min)	1378	984	1653	984
Port Size	Exhaust Port = G 1/4"		Inlet, Outlet = G 3/8" Exhaust Port = G 1/4"	
Working Medium	40 Micron Filtered Air			
Operation	Internal piloted			
Working pressure	1,5 ~ 8 Bar			
Max. Test Pressure	12 Bar			
Ambient Temperature	-20 ~ 70°C			
Operating Voltage Tolerance	± 10%			
Power Consumption	AC: 5.5VA DC: 4.8W			
Connector Protection	F Class, IP 65			
Connector	DIN Connector			
Switching Frequency	5 Cycles / Sec.			
Response Time	0.05 Sec.			
Coil	4V210 COIL DC12V/ 4V210 COIL DC24V/ 4V210 COIL AC24V/ 4V210 COIL AC110V/ 4V210 COIL AC220V			

4V300 Series

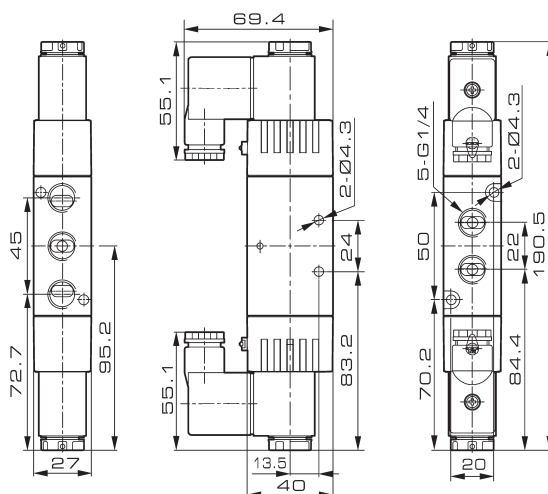
Solenoid Valve, Air Pilot Valve

Overall Dimension

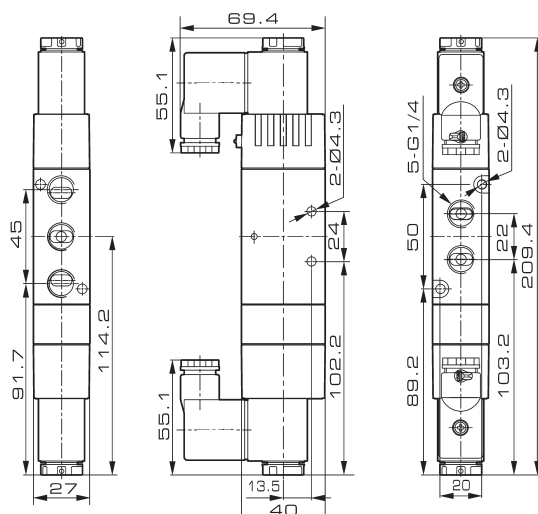
4V310-08



4V320-08



4V330-08

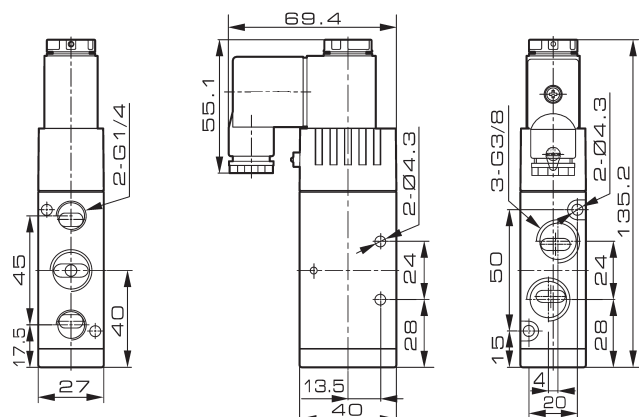


4V300 Series

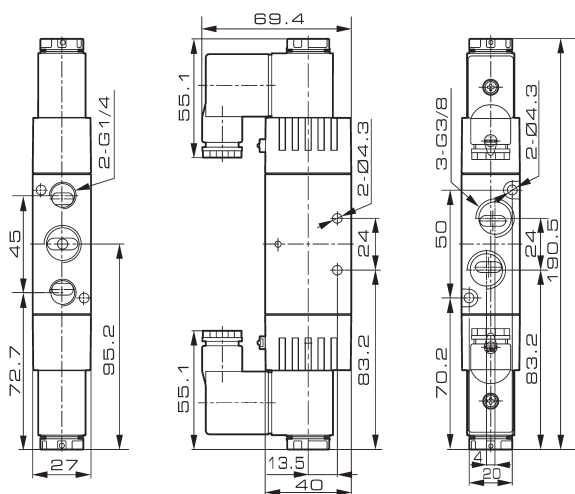
Solenoid Valve, Air Pilot Valve

Overall Dimension

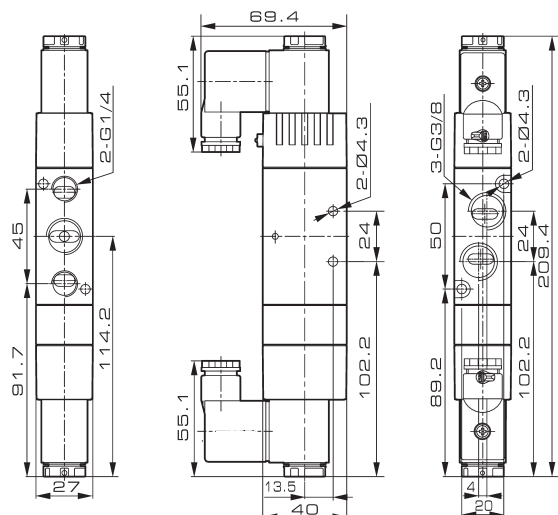
4V310-10



4V320-10



4V330-10

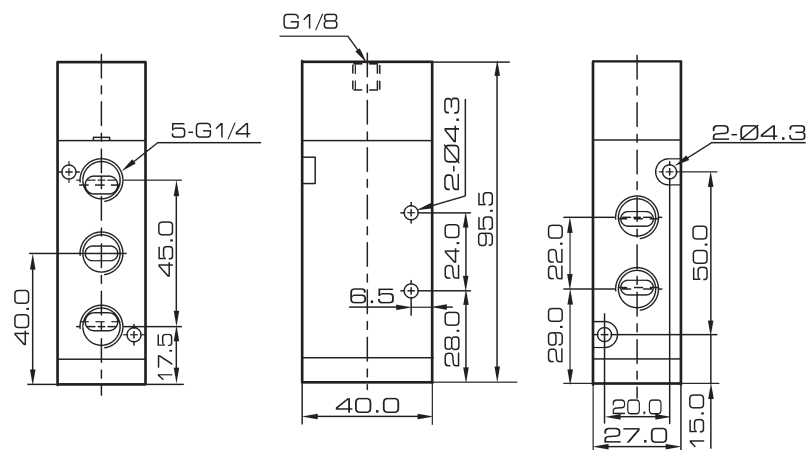


4V300 Series

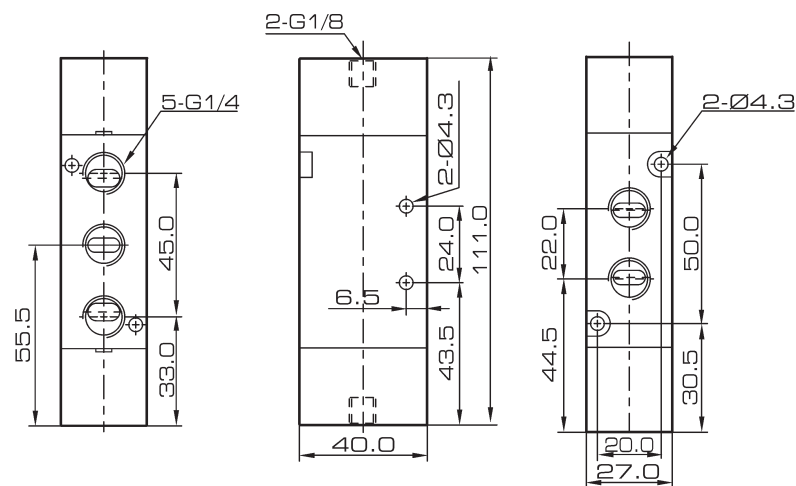
Solenoid Valve, Air Pilot Valve

Overall Dimension

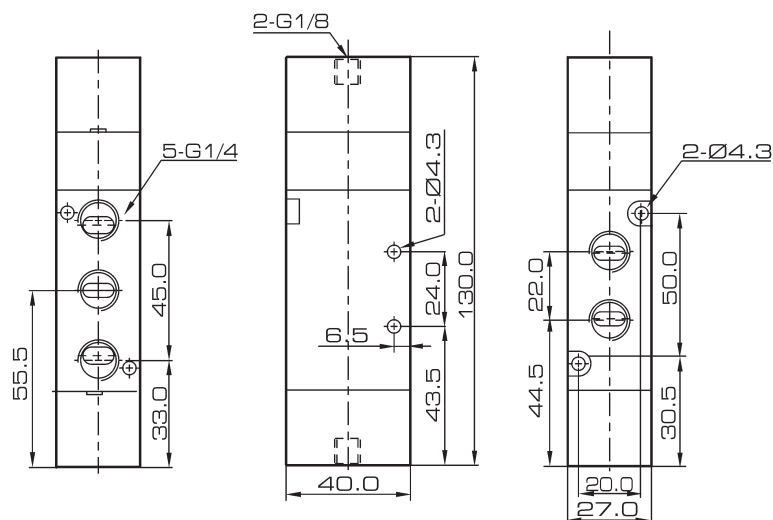
4A310-08



4A320-08



4A330-08

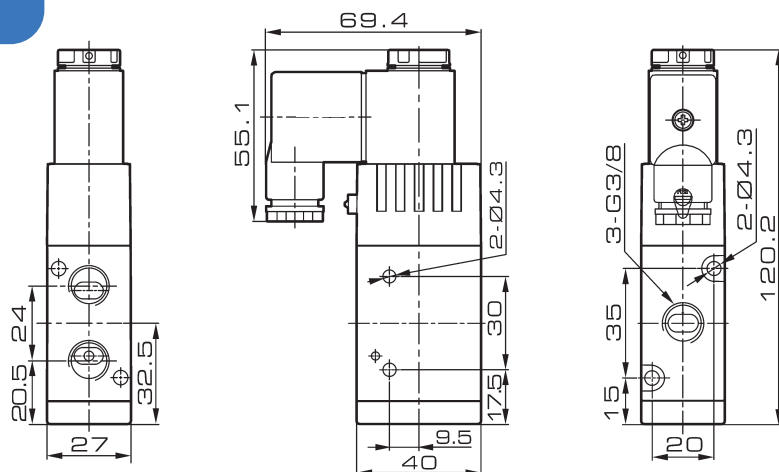


4V300 Series

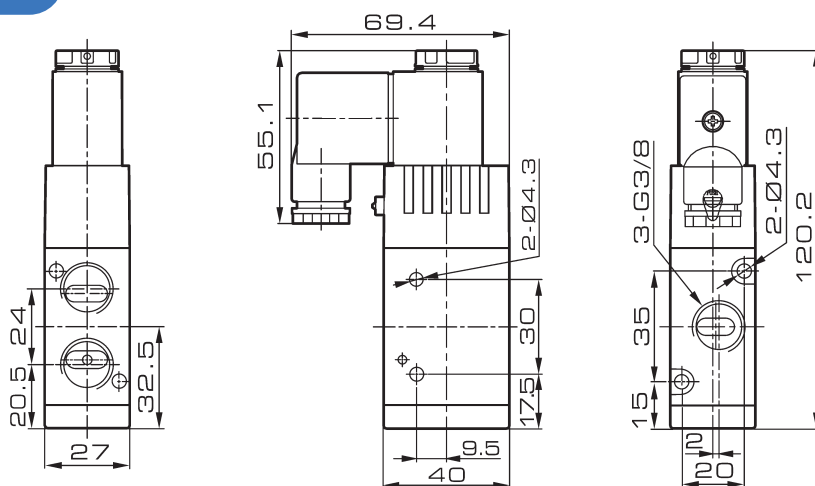
Solenoid Valve, Air Pilot Valve

Overall Dimension

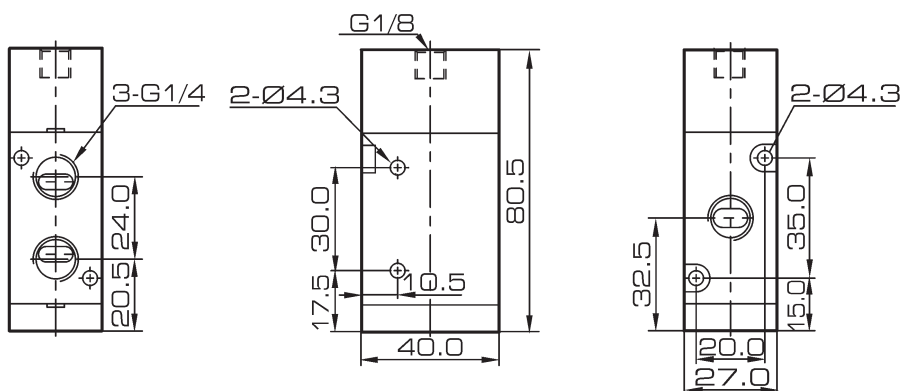
3V310-08



3V310-10



3A310-08

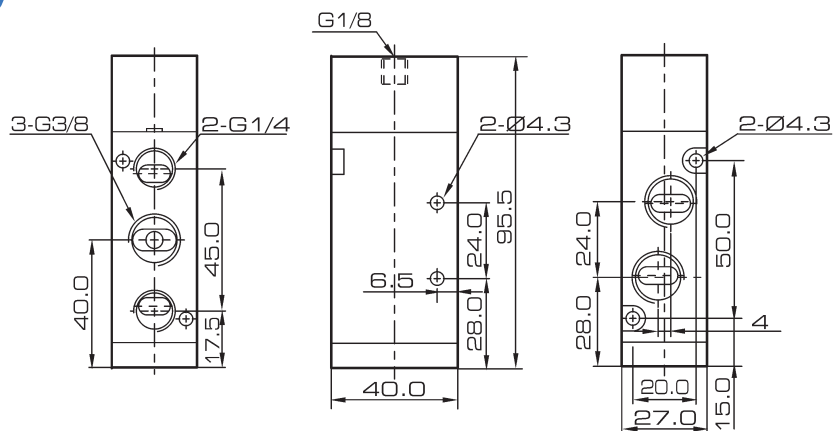


4V300 Series

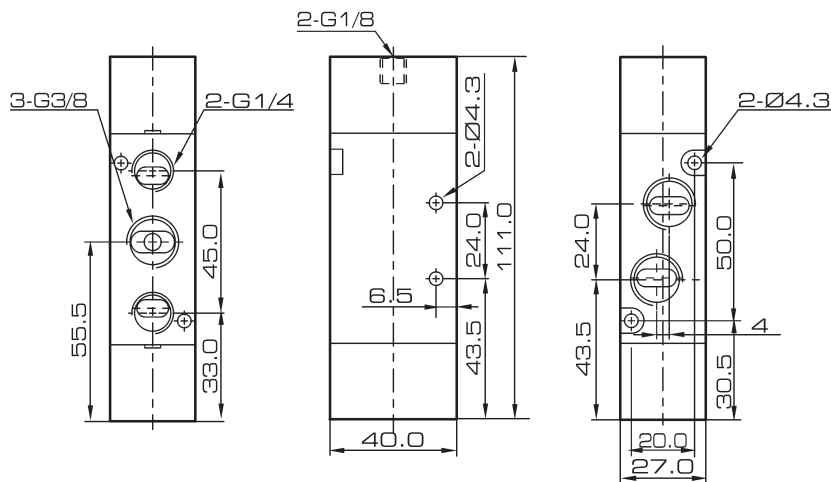
Solenoid Valve, Air Pilot Valve

Overall Dimension

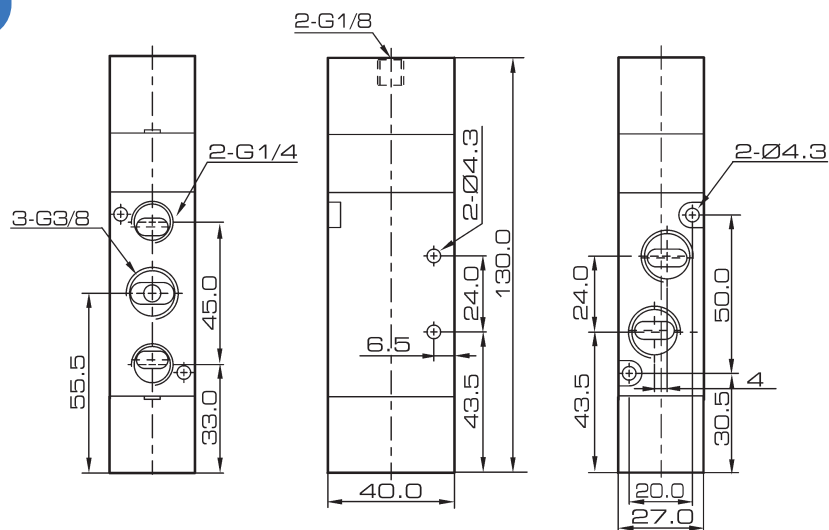
4A310-10



4A320-10



4A330-10

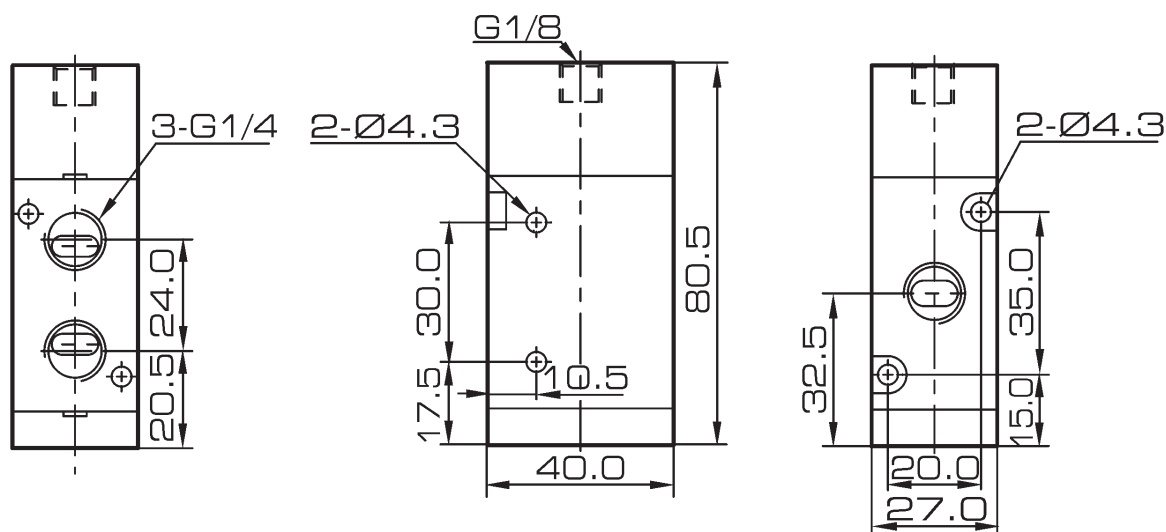


4V300 Series

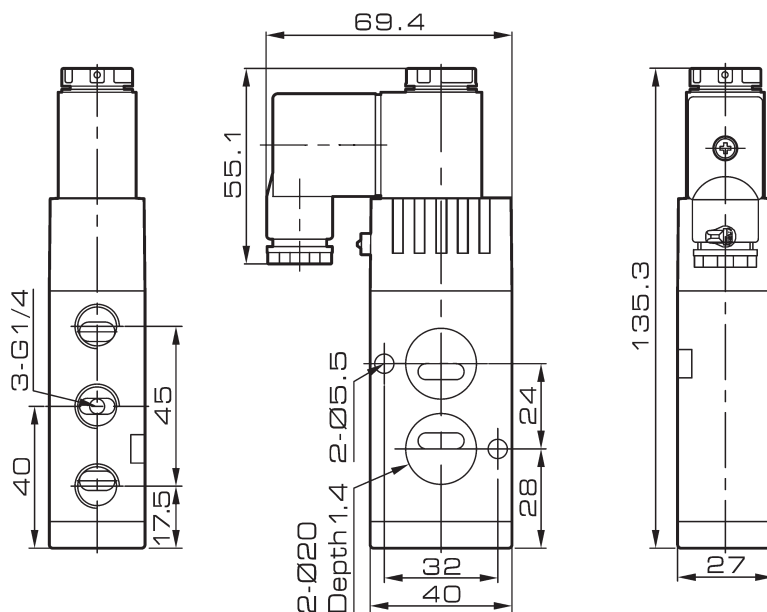
Solenoid Valve, Air Pilot Valve

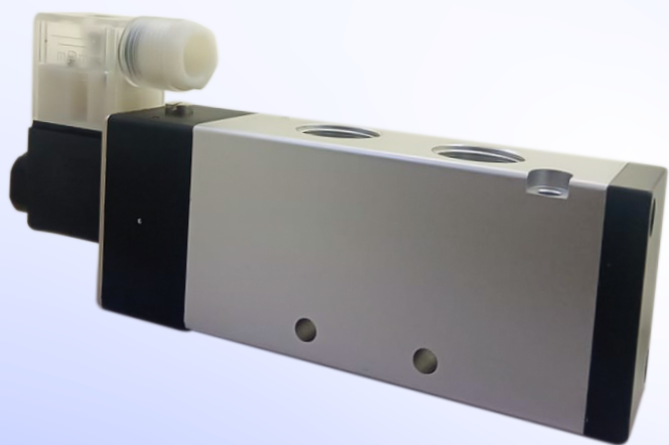
Overall Dimension

3A310-10



4V310-08B





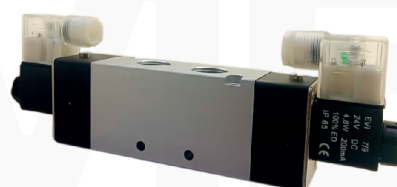
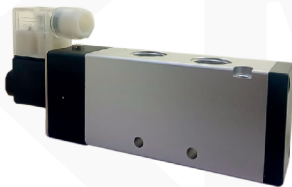
4V400

Solenoid Valve, Air Pilot Valve

4V400 Series

Solenoid Valve, Air Pilot Valve

AKME
SOLUÇÕES EM AUTOMAÇÃO



Ordering Code

4V

4

10

15

AC220V

Specification

4V: 5/2 (3) way solenoid valve

4A: 5/2 (3) way air pilot valve

3V: 3/2 way solenoid valve

3A: 3/2 way air pilot valve

Series Code

4:400 Series

Coil and Type

10: Single coil

20: Double coil

30C: Mid-position closed

30E: Mid-position exhausted

30P: Mid-position pressed

Port Size

15: 1/2"

Standard Voltage

DC12V

DC24V

AC24V

AC110V

AC220V

Specification

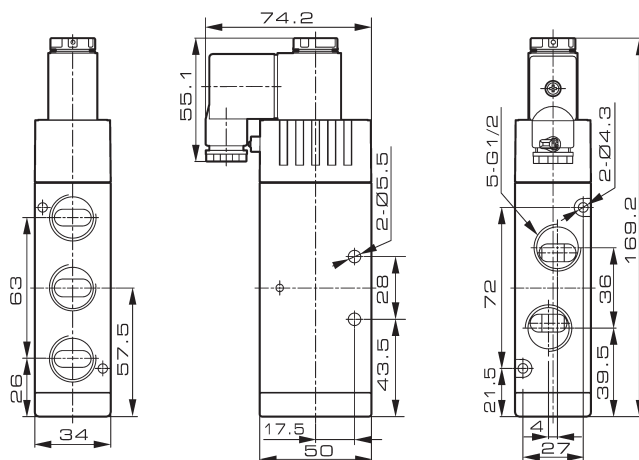
Valve Type	3/2 way - 5/2 way	5/3 way
Rated Flow (l/min)	2745	1653
Port Size	Inlet, Outlet, Exhaust Port = G1/2"	
Working Medium	40 Micron Filtered Air	
Operation	Internal piloted	
Working pressure	1,5 ~ 8 Bar	
Max. Test Pressure	12 Bar	
Ambient Temperature	-20 ~ 70°C	
Operating Voltage Tolerance	±10%	
Power Consumption	AC: 5.5VA DC: 4.8W	
Connector Protection	F Class, IP 65	
Connector	DIN Connector	
Switching Frequency	5 Cycles / Sec.	
Response Time	0.05 Sec.	
Code	4V210 COIL DC12V/ 4V210 COIL DC24V/ 4V210 COIL AC24V/ 4V210 COIL AC110V/ 4V210 COIL AC220V	

4V400 Series

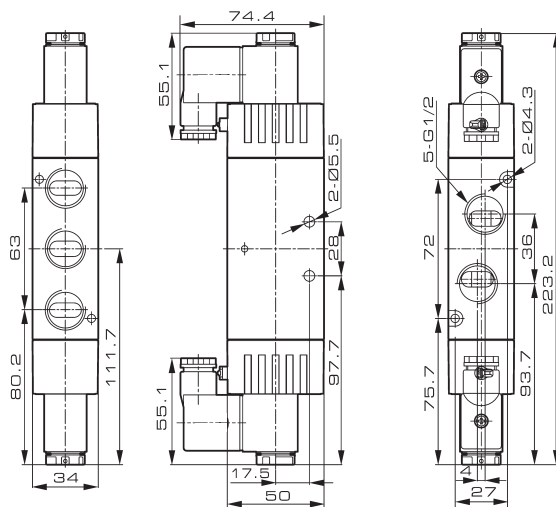
Solenoid Valve, Air Pilot Valve

Overall Dimension

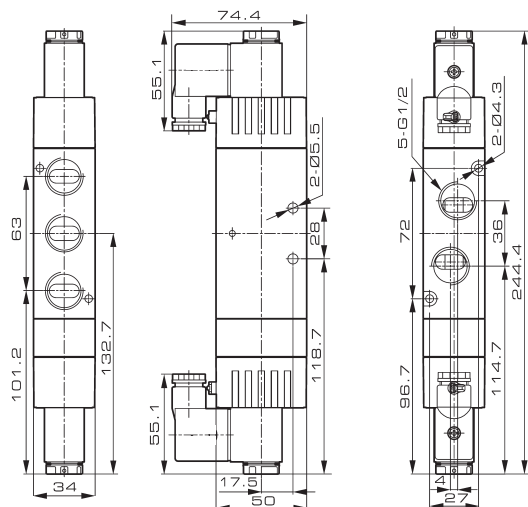
4V410-15



4V420-15



4V430-15

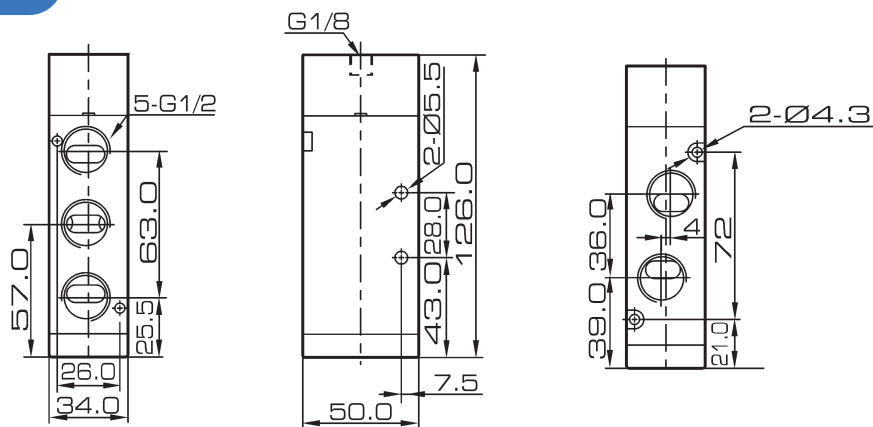


4V400 Series

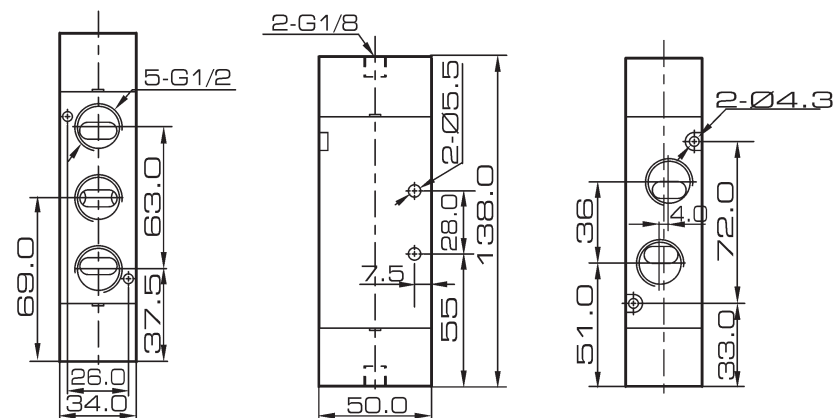
Solenoid Valve, Air Pilot Valve

Overall Dimension

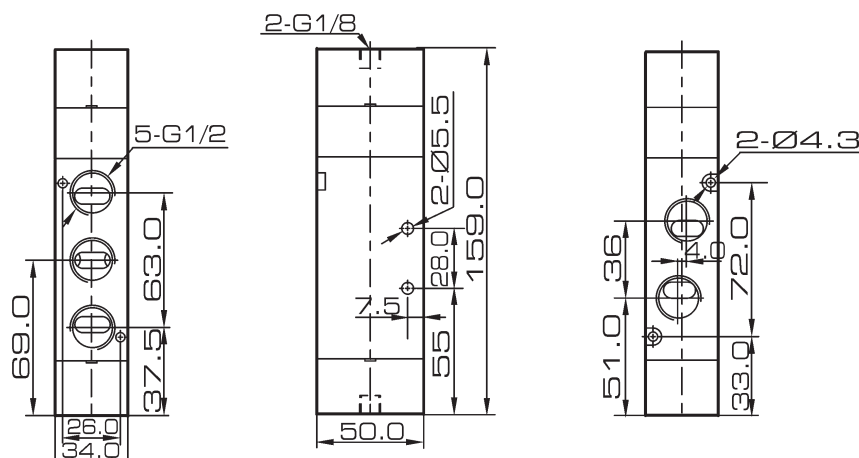
4A410-15



4A420-15



4A430-15

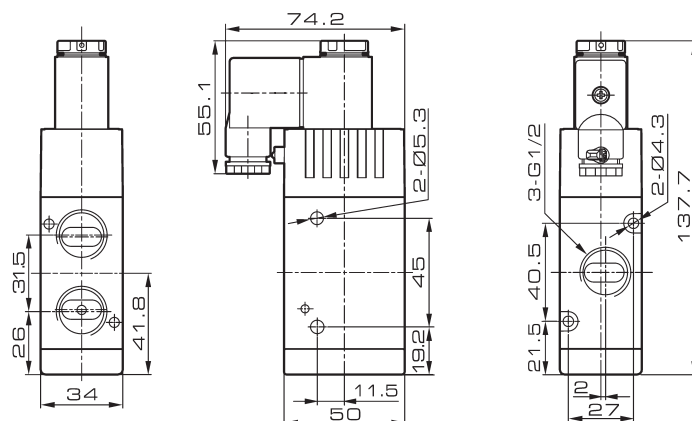


4V400 Series

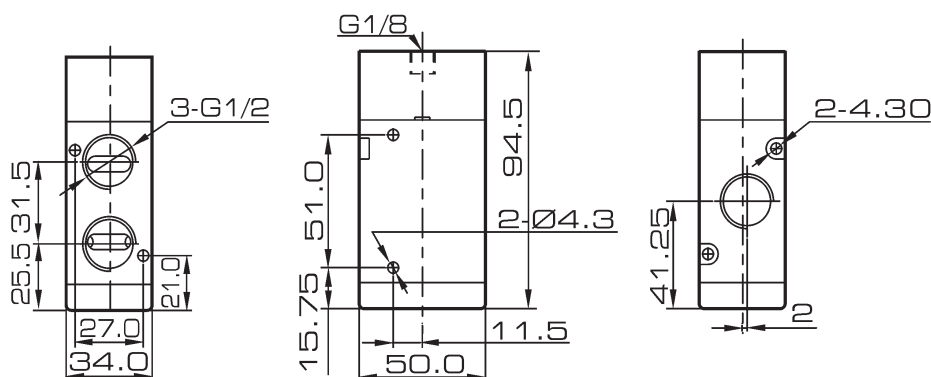
Solenoid Valve, Air Pilot Valve

Overall Dimension

3V410-15



3A410-15



3A420-15

