

## 4H

*Hand Pull Valve*

---

# 4H Series

Hand Pull Valve



## Ordering Code

4H	2	10	C	08	L
I	I	I	I	I	I
Specification	Series Code	Position Number	Middle Position	Port Size	Type
4H: 5/2	2: 200 Series 3: 300 Series	10: Single head two position 30: Single head three position	C: Mid-position closed E: Mid-position exhausted P: Mid-position pressured	08: G1/4"	Blank: 5/2 way lock type L: 5/3 way lock type S: 5/2 (3) way spring return type

## Specification

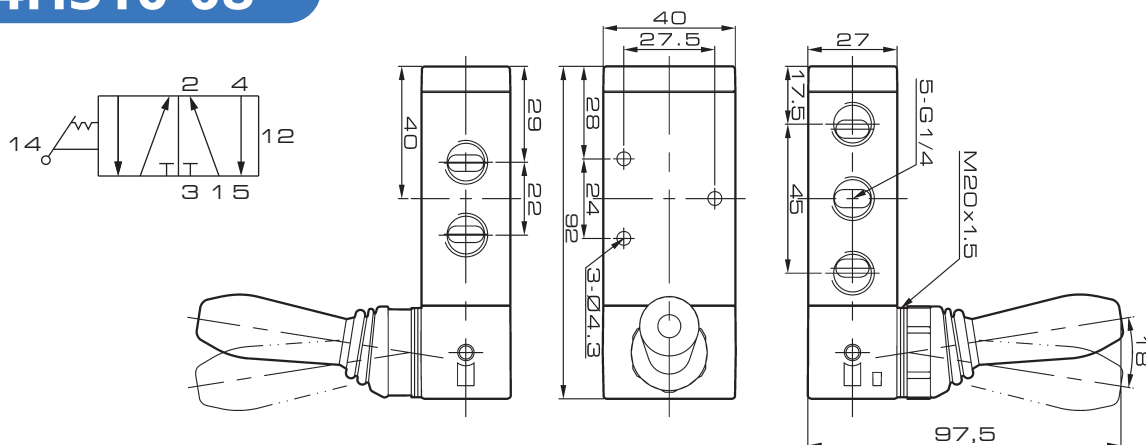
Model	5/2 (200 Series)	5/3 (200 Series)	5/2 - 5/3 (300 Series)
Working Medium	40 Micron Filtered Air		
Operation	Direct		
Rated Flow (l/min)	875	660	1378
Port Size	Inlet, Outlet = G1/4" Exhaust Port=G1/8"	Inlet, Outlet Exhaust Port = G1/4"	Inlet, Outlet Exhaust Port = G1/4"
Working Pressure	0 ~ 8 Bar		
Working Temperature	-20 ~ 70°C		

# 4H Series

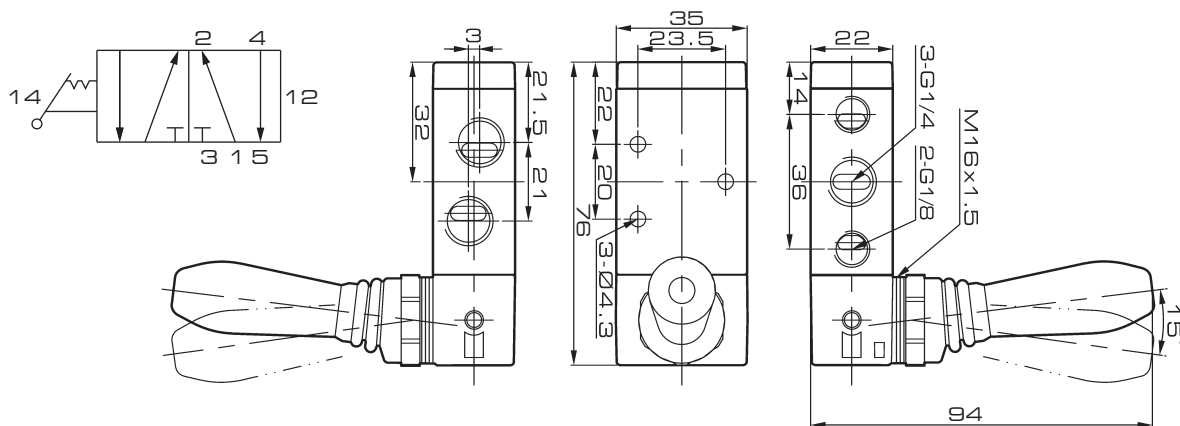
Hand Pull Valve

## Overall Dimension

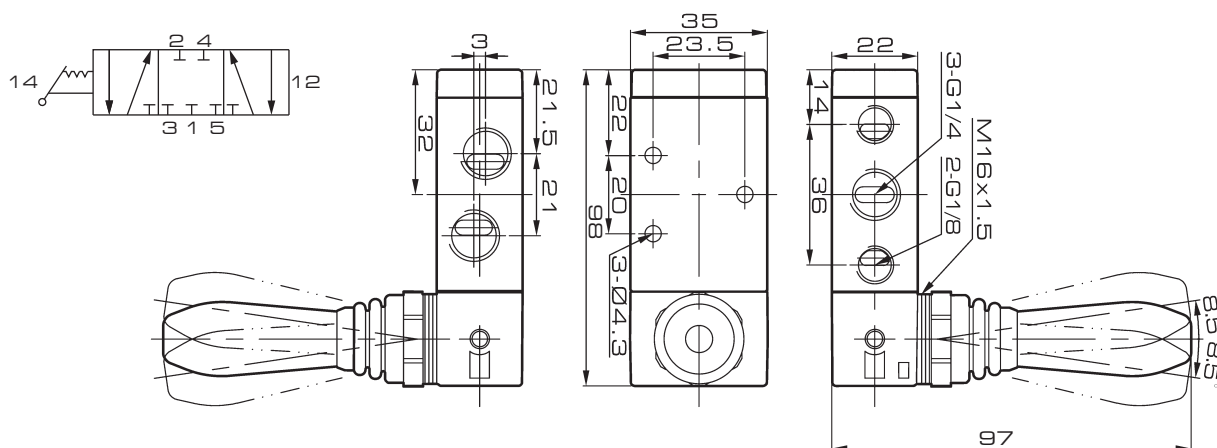
### 4H310-08



### 4H210-08



### 4H230C-08L

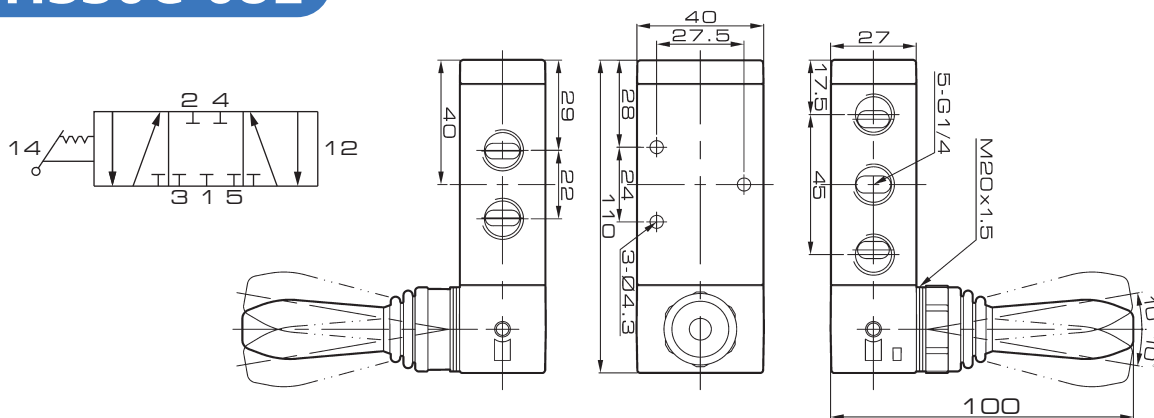


# 4H Series

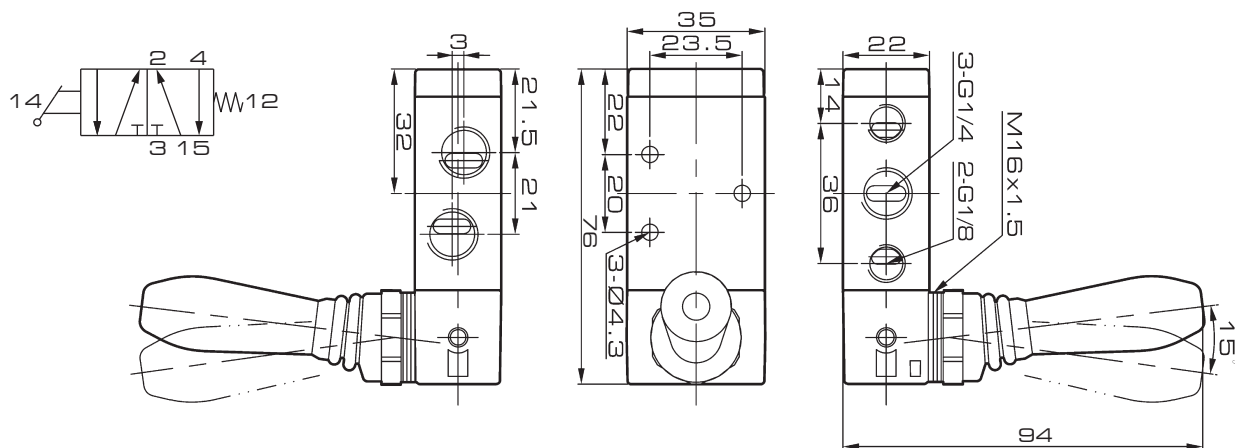
Hand Pull Valve

## Overall Dimension

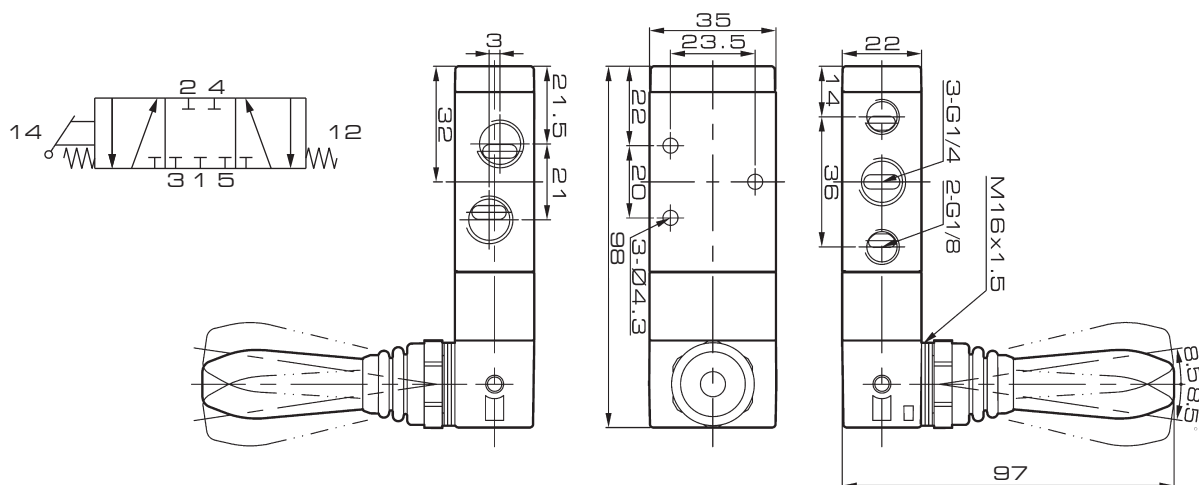
### 4H330C-08L



### 4H210-08S



### 4H230C-08S

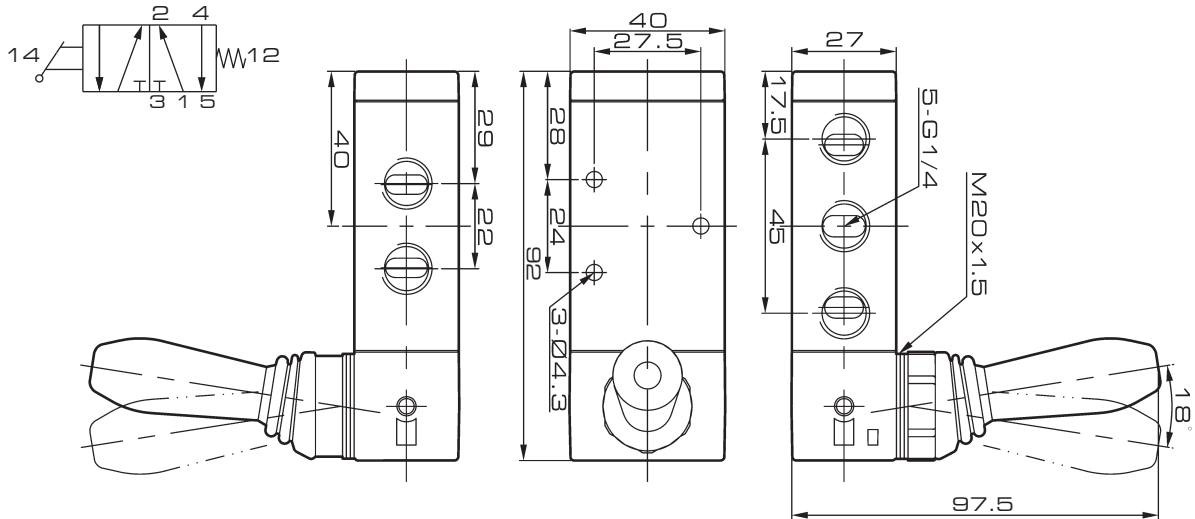


# 4H Series

Hand Pull Valve

## Overall Dimension

### 4H310-08S



### 4H330C-08S

